



札幌市

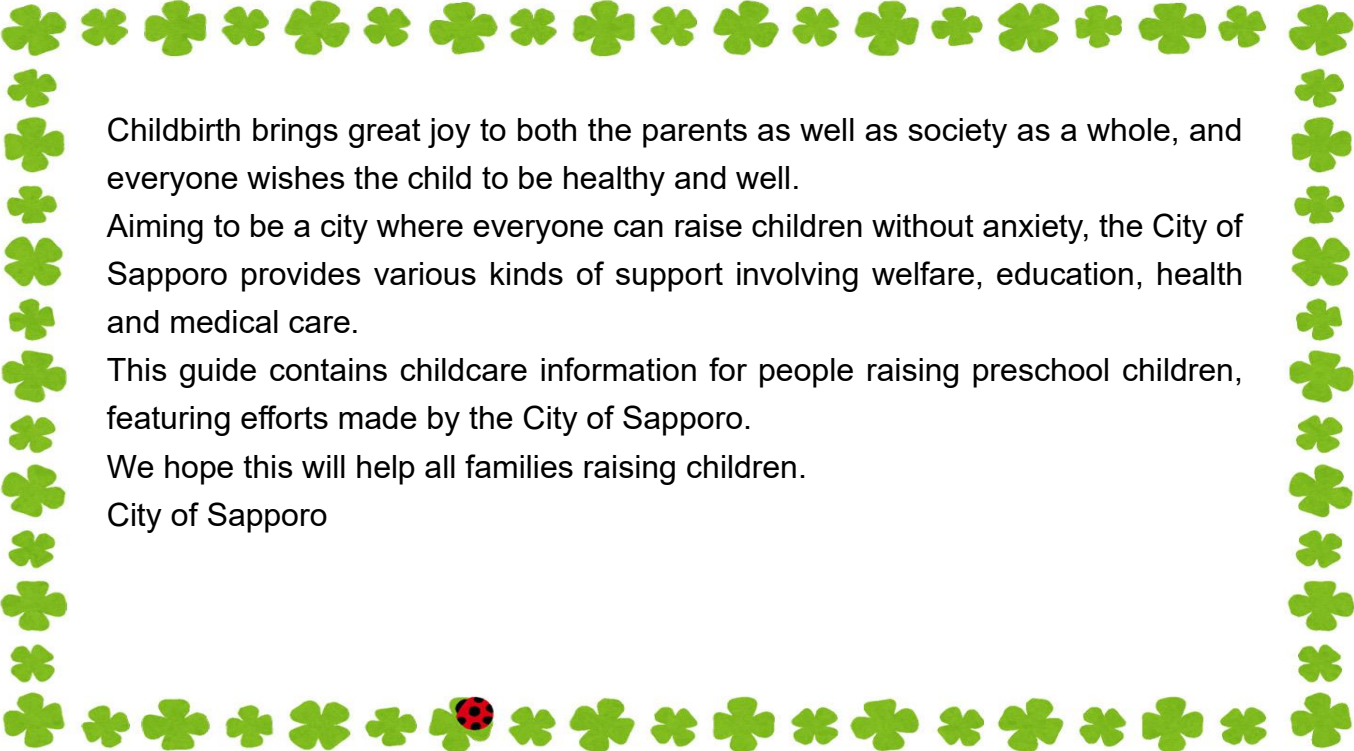


SAPPORO

**Please note that the contents of this site are subject to change due to the impact of outbreaks of infectious diseases.**

## **Contents**

Family Support Menu .....	01
Going Out with Children	
• Childcare Salons .....	03
• Day care centers that are open to public.....	06
• Childcare Support activities at Kindergartens.....	06
• Kids' Halls .....	07
• Libraries .....	12
Community Childcare Support .....	14
New Comprehensive Support System for Children & Child-rearing.....	15
Centers for Early Childhood Education and Care.....	19
Kindergartens .....	25
Day Care Centers .....	26
Community-based Childcare Programs .....	38
Employer-provided Childcare Services .....	46
Leaving a Child in someone's Care Temporarily .....	48
Consultation Services .....	51
For Concerns about Child's Development.....	58
For Single-parent Families .....	59
Aid and Allowances .....	61
Support Program for Mother and Child Health .....	64
Emergency Contact List .....	68
Contact information of Each Ward Office and Health Center .....	70



Childbirth brings great joy to both the parents as well as society as a whole, and everyone wishes the child to be healthy and well.

Aiming to be a city where everyone can raise children without anxiety, the City of Sapporo provides various kinds of support involving welfare, education, health and medical care.

This guide contains childcare information for people raising preschool children, featuring efforts made by the City of Sapporo.


We hope this will help all families raising children.

City of Sapporo

\*The contents of this guidebook are based on information as of April 1, 2021.

Please note that all services are available in Japanese only unless otherwise stated.

## ◆ Family Support Menu ◆

	Pregnancy	Birth	2-4 months
<b>Notices/ Allowance/ Check-up</b>	<ul style="list-style-type: none"> <li>• Pregnancy Notification</li> <li>• Issuance of Maternal and Child Health Handbook</li> <li>• Issuance of Maternity Badge Key strap</li> <li>• Parental Checkup</li> <li>• Lump-sum birth Allowance</li> </ul>	<ul style="list-style-type: none"> <li>• Birth Notification</li> <li>• Reporting to the Health Center</li> <li>• Health Insurance</li> <li>• Various allowance (p.60)</li> <li>• Aid for medical expenses (p.61)</li> <li>• Child medical benefits (p.61)</li> <li>• Home Visit Service for Newborns and Mothers (p.63) <ul style="list-style-type: none"> <li>• Newborn hearing screening (p.63)</li> </ul> </li> </ul>	<ul style="list-style-type: none"> <li>• Inoculation (p.65)</li> <li>• Health checkup of children aged 4 months (p.63)</li> </ul>
<b>Classes/ Seminars/ Consultations</b>	<ul style="list-style-type: none"> <li>• Prenatal Classes</li> <li>• Working Maternity School</li> </ul>	<ul style="list-style-type: none"> <li>• Consultations on Child's Development (p.57)</li> <li>• Consultations for Single Parent Families (p.58)</li> <li>• Consultations on Childcare (p.51)</li> <li>• Consultations on Child Health (p.63)</li> <li>• Childcare Seminars (p.14)</li> <li>• First aid Seminars</li> </ul>	<ul style="list-style-type: none"> <li>• Training Sessions for Weaning</li> </ul>
<b>Daycare, etc.</b>		<ul style="list-style-type: none"> <li>• Centers for Early Childhood Education and Care (p.19)</li> <li>• Public Day Care Centers (p.26)</li> <li>• Unauthorized Day Care Facilities (p.47)</li> <li>• Temporary Care (p.48)</li> </ul>	



## Going Out with Children

### ☆ Childcare Salons (Kosodate Salon)

A childcare salon is a place where preschool children, their parents and prospective parents get together to interact with each other.

#### ★ Childcare General Support Center (Kosodate Shien Sogo Center)

A permanent childcare salon is open here from 9:00 to 17:00 every day except for the year-end and New Year's holidays (Dec. 29 to Jan. 3). Childcare consultations, various seminars and book readings are provided.

Address: Minami 3-jo Nishi 7-chome, Chuo-ku ☎011-208-7961 Fax: 011-208-7962

#### ★ Day Care & Child-rearing Support Center in individual wards (Cheerful)

#### ★ Center for Early Childhood Education and Care “Nijihiro”

Ward-based permanent childcare salons are open at these centers from 9:00 to 17:00, Monday through Saturday, except for the year-end and New Year's holidays (Dec. 29 to Jan. 3) and national holidays.

Support, consultations and seminars on childcare as well as book readings are provided.

#### ★ “Sunday Salon”

Childcare salons are held from 10:00 to 12:00 (noon) on one Sunday a month at each center.

Name	Address/Tel	Sunday salon
Kita Ward Day Care & Child-rearing Support Center	Kita 25-jo Nishi 3-chome 3-3, Kita-ku ☎011-757-5381 Fax:011-757-5370	3rd Sun.
Higashi Ward Day Care & Child-rearing Support Center	Kita 9-jo Higashi 7-chome 1-25, Higashi-ku ☎ 011-711-7807 Fax:011-742-1829	4th Sun.
Shiroishi Ward Day Care & Child-rearing Support Center	Nango-dori, 1-chome-minami 8-1, Shiroishi-ku ☎ 011-868-3160 Fax:011-861-1920	2nd Sun.
Atsubetsu Ward Day Care & Child-rearing Support Center	Atsubetsu-chuo 1 Jo 6-chome, 1-10 Atsubetsu-ku ☎ 011-887-8166 Fax:011-896-7631	4th Sun.
Toyohira Ward Day Care & Child-rearing Support Center	Tsukisamu-higashi 1-jo 4-chome 2-11, Toyohira-ku ☎ 011-851-2510 Fax:011-857-1634	3rd Sun.
Minami Ward Day Care & Child-rearing Support Center	Makomanai Saiwai-machi 2-chome 2-2, Minami-ku ☎ 011-215-0183 Fax:011-215-0184	1st Sun.
Nishi Ward Day Care & Child-rearing Support Center	Nijuyonken 3-jo 5-chome 6-1, Nishi-ku ☎ 011-613-7882 Fax:011-622-5389	1st Sun.
Teine Ward Day Care & Child-rearing Support Center	Teine Honcho 3-jo 2-chome 4-15, Teine-ku ☎ 011-681-3162 Fax:011-694-2749	2nd Sun
Center for Early Childhood Education and Care “Nijihiro” (public facility)	Shinei 2-jo 1-chome 11-20, Kiyota-ku ☎ 011-883-3044 Fax:011-883-9547	4th Sun.

### ★ Machinaka Kids' Salon “Odorinko”

The childcare salon where anyone can drop on in freely is open in the city center.

Location: 2F, S1 Building, Minami 1-jo Nishi 4-chome, Chuo-ku

Hours: 11:00 – 16:00

Closed: Wednesday, the Year-end and New Year's Holidays

◆ Inquiries: Machinaka Kids' Salon “Odorinko” ☎ 011-211-5891 (Japanese)

### ★ Community-based Childcare Salons

Childcare salons organized by local residents are held at community halls or elementary schools.

Please ask about the venues and hours.

◆ Inquiries:

- Day Care & Child-rearing Support Center in individual wards (Cheerful) p.3
- Center for Early Childhood Education and Care “Nijiirō” p.3
- Regional ward office (Childcare Support Section) p.16

### ★ Permanent Childcare Salons

These salons are open three or more times a week (except for branches) for at least 5 hours at a time at city-designated venues. They are managed by community organizations or NPO groups.

Name	Address	Tel	Days/Hours
Ten-ten	Room 101&102, No. 3 Mutsu Mansion, Minami 3-jo Nishi 28-chome 1-20, Chuo-ku	011-676-3387	Mon, Tue, Wed, Thu, Sat 10:00 - 15:00.
Puchi Hiroba	Café Amanto, Takahashi Bld. 2F, Asabu-cho 6-chome 14-6, Kita-ku	080-2870-9735	Tue, Fri, Sat 10:00 - 15:00
Cherry Land	Motomachi Kita 27-jo Hall, Kita 27-jo Higashi 19-chome 7-2, Higashi-ku	011-299-5660	Tue, Wed, Sat 8:30 - 13:30
Peace	Century Motomachi Room 101, Kita 25-jo Higashi 10-chome 1-8, Higashi-ku	090-6212-1118	Mon, Tue, Wed, Thu, Fri 10:00 - 15:00
Milky Land	Kitago 2-jo 4-chome 5-10 1F, Shiroishi-ku	090-7650-6378	Mon, Tue, Thu, Sat 9:30 - 14:30 Wed 13:00 - 18:00
Branch of Milky Land	Shiroishi Rubber Seisakusho, Kitago 4-jo 4-chome 20-17, Shiroishi-ku	090-7650-6378	1 <sup>st</sup> &5 <sup>th</sup> week: Sun 10:00 - 15:00
Branch of Milky Land	Hitsujigaoka Dori Neighborhood Association Hall, Utsukushigaoka 3-jo 5-chome 5-15, Kiyota-ku	090-7650-6378	1 <sup>st</sup> &2 <sup>nd</sup> &3 <sup>rd</sup> week: Fri 10:00 - 15:00
Kira-kira Hiroba	Westlife 2F, Atsubetsu Nishi 3-jo 2-chome 6-16, Atsubetsu-ku	080-9150-0022	Mon, Wed, Thu 9:30 - 14:30
Branch of Koro koro Hiroba	Local Exchange Facility Pirika, Sin-kotoni 2-jo 6-chome 4-19, Kita-ku	080-7524-0453	1 <sup>st</sup> &3 <sup>rd</sup> &4 <sup>th</sup> week: Mon 10:00 - 15:00
Branch of Koro koro Hiroba	Kotoni Hall, Kotoni 4-jo 2-chome 6-40, Nishi-ku	080-7524-0453	2 <sup>nd</sup> week: Tue 10:00 - 15:00

Name	Address	Tel	Days/Hours
Hot Time	Oyachi Hall, Oyachi-nishi 2-chome 2-2, Atsubetsu-ku	011-665-1717	1 <sup>st</sup> , 3 <sup>rd</sup> & 5 <sup>th</sup> week: Mon, Fri, Sat 2 <sup>nd</sup> & 4 <sup>th</sup> week: Mon, Thu, Fri 9:30 - 14:30
Nekko Hiroba	Tsukisamu-higashi 3-jo 6-chome Toyohira-ku	080-6083-6092	Mon, Wed, Sat 10:00- 15:00 Tue, Fri, 12:00-17:00 3 <sup>rd</sup> week: Fri, 15:00- 20:00
Berry Time	Nishioka 5-jo 11-chome 2-15- Haitsu Shirakaba A, Toyohira-ku	090-9522-7810	Mon, Tue, Wed, Thu, Fri, 9:30 - 14:30
Branch of Berry Time in Toyohira	Toyohira Ward Community Center, Hiragishi 6-jo 10-chome, Toyohira-ku	090-9522-7810	Sat 10:00 - 15:00
Kira-kira Kids	Kiyota Community Hall No.5, Kiyota 7-jo 1-chome 40-20, Kiyota-ku	080-4049-3173	Tue, Wed, Fri 10:00 - 15:00
Mukudori Home Fureai no Kai	Fujino 2-jo 1-chome 13-10, Minami-ku	011-591-7035	Mon, Tue, Sat 10:00 – 16:00
Pao-pao Hiroba	Murohashi Bldg. 2F, Sumikawa 6-jo 3-chome 1-25, Minami-ku	090-4878-1515	Mon, Tue, Wed, Sat 10:00 -15:00 Thu 12:30 - 17:30
Chiisana Ouchi	Nishino 4-jo 5-chome 6-21, Nishi- ku	011-676-6513	Tue, Thu, Sat 9:00 – 14:00 Wed, Fri 12:00 - 17:00
Himawari Salon	Nishino Community Hall No. 2, Nishino 8-jo 6-chome 5-5, Nishi- ku	011-663-9951	Wed, Thu, Fri 10:00 -15:00
Komi-komi Cafe	Teine Rakuichi BldgC 1F, Maeda 1-jo 12-chome 1-50, Teine-ku	090-2690-2018	Tue, Wed, Thu 9:30 - 14:30
Asobeba-iisho	Maeda Community Hall, Maeda 6-jo 11-chome 2-1, Teine- ku	070-1421-0232	Mon, Tue, Wed, Fri 9:30 - 15:30

### ★ Kids' Hall Childcare Salons

- 65 permanent salons are open from 9:00 to 12:00 (noon) three times a week.
- 38 childcare salons are open from 10:30 to 12:00 (noon) once a week.

\*Please check which days they are open and visit them directly.

◆ Inquiries: Each Kids' Hall p.7-11



## ☆ Day care centers that are open to the public

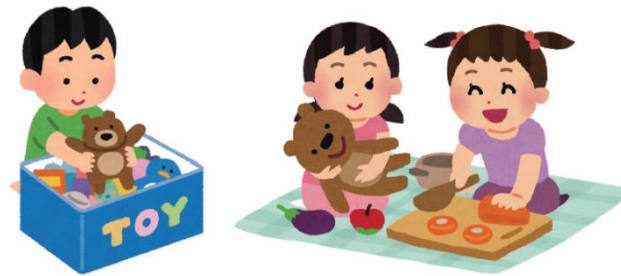
Municipal day care centers make their know-how available by opening their facilities to the public as venues where local families can interact with the children who use the centers, consult about childcare and enjoy a casual time together.

- ◆ Inquiries: Public day care centers marked with a star (★) p.27-37

## ☆ Childcare support activities at kindergartens

Municipal kindergartens offer “Poroppu Square” childcare support activities for preschool children. For further details, please inquire with each kindergarten.

- ◆ Inquiries: Each kindergarten



## ★ Kids' Halls (Jido-kan)

Children are free to use the gymnastics room, play rooms and library.

- Hours: 8:45 – 18:00
- Target: elementary, junior high and high school students, infants/young children and their parents
- Closed: The year-end and New Year's holidays (Dec. 29 to Jan. 3), Sundays and national holidays.

◆ Inquiries: Sapporo Youth & Women's Activity Association ☎ 011-671-4121

### ★ List of Kids' Hall As of April, 1, 2020

\*Days of operation can vary depending on the month.

#### [Chuo Ward]

Name	Address	Tel	Childcare Salon
Nakajima	Nakajima Koen 1-1	511-3397	Thu. (9:00 - 12:00)
Maruyama	Kita 1-jo Nishi 23-chome 1-18	621-0325	Fri.
Yamahana	Minami 24-jo Nishi 13-chome 1-1	561-6220	Mon, Wed, Thu (3 <sup>rd</sup> week: Mon, Tue, Wed)
Midorigaoka	Minami 10-jo Nishi 23-chome 1-5	562-1283	Tue. Wed. Thu.
Miyanomori	Miyanomori 2-jo 5-chome 2-21	641-9710	Fri.
Soen	Kita 7-jo Nishi 15-chome 28	641-7008	Tue. Wed. Thu.
Naebo Harunire *Not hold Children's Club (p.47)	Kita 1-jo Higashi 10-chome 15-9	221-2271	Wed. Thu. Fri.
Kosai	Minami 14-jo Nishi 16-chome 2-15	563-2263	Tue. Thu. Fri.
Maruyama Nishimachi	Maruyamanishimachi 8-chome 1-50	611-1980	●
Yamahana Kashiwa	Minami 15-jo Nishi 8-chome 1-20	533-0622	1 <sup>st</sup> & 2 <sup>nd</sup> week: Tue. Thu. Fri. 3 <sup>rd</sup> , 4 <sup>th</sup> , 5 <sup>th</sup> week: Tue. Wed. Fri.
Nijo Harunire	Minami 2-jo Nishi 15-chome	252-7283	●

\*Halls marked with a black dot (●) don't have regular childcare salon days, but hold events for babies, toddlers and mothers occasionally.

#### [Kita Ward]

Name	Address	Tel	Childcare Salon
Shin-Kotoni	Shin-kotoni 11-jo 7-chome 3-16	761-7501	Tue. Wed. Thu. (3 <sup>rd</sup> week: Wed. Thu. Fri.)
Shinoro	Shinoro 4-jo 9-chome 3-1	772-9292	Tue. Wed. Thu. (3 <sup>rd</sup> week: Tue. Wed. Fri.)
Shinkawa	Shinkawa 4-jo 11-chome 5-16	764-3664	Tue. Wed. Fri.
Tonden	Tonden 5-jo 6-chome 2-23	772-7130	Tue. Wed. Thu.
Taihei	Taihei 8-jo 7-chome 2-1	771-6324	Tue. Wed. Fri.

### [Kita Ward]

Name	Address	Tel	Childcare Salon
Asabu	Kita 39-jo Nishi 5-chome 3-5	757-0185	Wed.
Shin-Kotoni Nishi	Shin-kotoni 9-jo 13-chome 4-1	762-6632	Tue.
Shinoro Nishi	Shinoro 6-jo 4-chome 2-32	771-2191	Wed. Thu. Fri.
Shinkawa Chuo	Shinkawa 3-jo 3-chome 3-21	762-8433	Wed. Thu. Fri.
Horokita	Kita 17-jo Nishi 6-chome 1-20	727-6225	Tue.
Elm no Mori	Kita 27-jo Nishi 14-chome	737-3974	Mon. Wed. Fri.
Koyo	Shin-kotoni 6-jo 12-chome 1-25	765-6141	Wed. Thu. Fri.
Yurigahara	Yurigahara 9-chome 9-11	774-2050	Tue. Wed. Fri.
Ainosato	Ainosato 1-jo 3-chome 6-1	778-3755	Tue. Thu. Fri.
Ainosato Higashi	Ainosato 3-jo 7-chome 9-1	778-2358	Wed. Thu. Fri.
Tonden Kita	Tonden 8-jo 7-chome 1-39	788-8122	Tue. Wed. Fri. (4 <sup>th</sup> week: Tue. Wed. Thu.)

### [Higashi Ward]

Name	Address	Tel	Childcare Salon
Shinsei	Kita 8-jo Higashi 7-chome 1	711-1339	●
Hinomaru	Kita 38-jo Higashi 9-chome 1-29	752-1551	Mon. Wed. Fri.
Fushiko	Fushiko 10-jo 3-chome 6-8	782-5620	Wed. Thu. Fri. (4 <sup>th</sup> week: Tue. Wed. Thu.)
Naebo	Naebocho 5-chome 7-1	711-8433	Tue. Wed. Thu.
Satsunae	Higashi-naebo 9-jo 3-chome 2-30	791-5200	Wed. Thu. Fri.
Motomachi	Kita 21-jo Higashi 18-chome 5-1	784-6664	Thu.
Okadama Takara	Kita 35-jo Higashi 23-chome 7-10	784-8095	Tue. Wed. Fri.
Sakae Nishi	Kita 46-jo Higashi 5-chome 3-18	752-8363	1 <sup>st</sup> , 3 <sup>rd</sup> , 5 <sup>th</sup> week: Tue. Wed. Fri. 2 <sup>nd</sup> & 4 <sup>th</sup> week: Tue. Wed. Thu.
Hokko	Kita 18-jo Higashi 5-chome 1-1	753-6353	●
Higashi Naebo	Higashi-naebo 5-jo 2-chome 2-10	786-3191	Wed. Thu. Fri.
Hokuei	Kita 30-jo Higashi 6-chome 1-15	711-3755	Wed. Thu. Fri.
Okadama Hibari	Kita-okadama 4-jo 1-chome 12-5	785-6137	Tue. Wed. Fri.
Motomachi Minami	Kita 16-jo Higashi 16-chome 2-1	785-6148	Tue.
Higashi-kariki	Higashi-kariki 14-jo 2-chome 1-1	214-9215	Thu. (9:00 - 12:00)
Eisai-sho Hannoki	Kita 39-jo Higashi 4-chome	768-8883	●

\* Halls marked with a black dot (●) don't have regular childcare salon days, but hold events for babies, toddlers and mothers occasionally.

### [Shiroishi Ward]

Name	Address	Tel	Childcare Salon
Kitago	Kitago 4-jo 5-chome 1-1	871-2770	Fri.
Kikusui Yayoi	Kikusui 1-jo 4-chome 6-61	841-5150	Tue. Wed. Thu. (2 <sup>nd</sup> week: Wed. Thu. Fri.)
Higashi-sapporo	Higashi-Sapporo 5-jo 3-chome 2-26	822-5811	Tue. Wed. Fri.
Hokuto Shiroishi	Kawashimo 3-jo 5-chome 3-1	875-1311	Fri.
Higashi Shiroishi	Hondori 13-chome Minami 10-1	863-8833	Wed. Thu. Fri.
Kikusui Motomachi	Kikusui Motomachi 8-jo 2-chome 15-5	873-1610	Tue. Wed. Fri. (4 <sup>th</sup> week: Tue. Wed. Thu.)
Kashiwagaoka	Heiwadori 8-chome Kita 3-44	865-7520	Tue. Wed. Thu.
Sakaedori	Sakaedori 6-chome 19-12	853-5706	Thu.
Kawakita	Kawakita 4-jo 1-chome 4-29	872-0002	Tue. Wed. Fri.

### [Atsubetsu Ward]

Name	Address	Tel	Childcare Salon
Momijidai	Momijidai-nishi 6-chome 1-2	897-0775	Tue. Wed. Fri. (2 <sup>nd</sup> week: Tue. Thu. Fri.)
Atsubetsu Nishi	Atsubetsu-nishi 2-jo 4-chome 3-20	891-7237	Fri.
Atsubetsu Minami	Atsubetsu-minami 1-chome 15-10	894-1710	Wed.
Atsubetsu Higashi	Atsubetsu-higashi 3-jo 4-chome 4-13	897-4425	Tue. Wed. Thu.
Aoba	Aobacho 7-chome 1-38	895-9962	Mon. Wed. Fri.
Shinano	Atsubetsuchuo 4-jo 5-chome 7-16	891-2025	Tue. Wed. Thu. (3 <sup>rd</sup> week: Tue. Wed. Fri.)
Kaminoppo	Kaminoppo 2-jo 4-chome 5-1	895-9749	Wed. Thu. Fri.
Momijidai Fureai	Momijidai-higashi 7-chome 9-1	897-4760	Thu.

### [Toyohira Ward]

Name	Address	Tel	Childcare Salon
Toyohira	Toyohira 6-jo 7-chome 1-12	811-1376	Tue. Wed. Thu. 3 <sup>rd</sup> week: Wed. Thu. Fri.
Nishioka	Nishioka 3-jo 6-chome 6-1	852-8113	Wed.
Hiragishi	Hiragishi 3-jo 9-chome 15-22	812-2493	Tue. Thu. Fri.
Higashi Tsukisamu	Tsukisamu-higashi 3-jo 16-chome 13-28	853-9741	Tue.
Fukuzumi	Fukuzumi 1-jo 1-chome 5-5	855-0350	Tue. Wed. Thu.
Nakanoshima	Nakanoshima 2-jo 3-chome 8-1	811-5215	Tue. Wed. Thu.

**[Toyohira Ward]**

Name	Address	Tel	Childcare Salon
Misono	Misono 6-jo 5-chome 4-1	824-5440	Thu.
Tsukisamu	Tsukisamu-nishi 1-jo 6-chome 3-21	851-6433	Wed.
NishiokaTakadai	Nishioka 4-jo 11-chome 4-22	581-5394	Fri.
TenjinYama	Hiragishi 1-jo 19-chome 2-55	816-0388	Mon. Tue. Wed.
Ayameno	Tsukisamu-higashi 4-jo 10-chome6-10	857-5862	Tue. Wed. Thu.
Hitsujigaoka	Tsukisamu-higashi 1-jo 16-chome	876-8022	Wed

**[Kiyota Ward]**

Name	Address	Tel	Childcare Salon
Kiyota	Kiyota 1-jo 4-chome 3-53	882-2960	Fri.
Hiraoka	Hiraoka 8-jo 1-chome 6-22	881-9766	Tue. Thu. Fri.
Kitano	Kitano 4-jo 2-chome 8-17	884-6992	Tue. Thu. Fri.
Kiyota Chuo	Kiyota 6-jo 2-chome 10-1	884-9610	Wed.
Satozuka	Satozuka 2-jo 3-chome 12-23	881-4822	Tue. Wed. Fri. (1 <sup>st</sup> week: Wed. Thu. Fri.)
Kitanodai	Kitano 4-jo 5-chome 4-58	882-9640	Wed. Thu. Fri. (2 <sup>nd</sup> week: Tue. Thu. Fri.)
Utsukushigaoka	Utsukushigaoka 5-jo 6-chome 1-5	885-9766	Tue.
Hiraoka Midori	Hiraokakoen Higashi 10-chome 13-10	884-6866	Wed. Thu. Fri.

**[Minami Ward]**

Name	Address	Tel	Childcare Salon
Sumikawa	Sumikawa 5-jo 4-chome	831-5150	Tue.
Moiwa	Kawazoe 8-jo 2-chome 1-26	571-8616	Tue. Wed. Thu.
Fujino	Fujino 2-jo 8-chome 6-1	592-1532	Wed.
Makomanai	Makomanaihoncho 3-chome 4-1	584-3336	Thu.
Minaminosawa	Minamisawa 4-jo 2-chome 6-21	571-2909	Fri.
Ishiyama	Ishiyama 1-jo 4-chome	591-7730	Wed.
Tokiwa	Tokiwa 2-jo 3-chome	592-6091	Thu.
Makomanai Gorin	Makomanai izumicho 3-chome 1-6	581-1823	Tue. Thu. Fri.
Misumai	Misumai 3-jo 6-chome 8-25	596-3911	Thu.

**[Nishi Ward]**

Name	Address	Tel	Childcare Salon
Teine Higashi	Nishimachi kita 10-chome 3-8	661-7332	Fri.
Hachiken	Hachiken 7-jo Higashi 1-chome 1-7	631-7061	Tue. Wed. Thu.
Nishino	Nishino 7-jo 3-chome 5-15	663-6355	Wed.
Hassamu Kita	Hassaku 13-jo 4-chome 1-37	664-9710	Tue. Thu. Fri.
Yamanote	Yamanote 6-jo 5-chome 2-1	642-0118	Wed. Thu. Fri.
Nijuyonken	Nijuyonken 4-jo 3-chome 4-44	644-4730	Wed.
Hassamu	Hassamu 5-jo 7-chome 1-2	666-0206	Wed. Thu. Fri.
Miyanosawa	Miyanosawa 1-jo 5-chome 11-25	666-5323	Tue. Wed. Fri.
Heiwa	Heiwa 1-jo 5-chome 1-27	667-3359	Tue. Thu. Fri.
Hachiken Kita	Hachiken 8-jo Nishi 6-chome 1-20	644-3643	Wed. Thu. Fri.

**[Teine Ward]**

Name	Address	Tel	Childcare Salon
Teine Maeda	Maeda 2-jo 12-chome 1-4	682-2070	Thu.
Inaho	Inaho 3-jo 5-chome 9-23	684-0901	Tue. Thu. Fri.
Akebono	Akebono 9-jo 1-chome 9-40	685-4821	Thu.
Tomioka	Tomioka 3-jo 6-chome 2-7	685-9393	Wed.
Nishimiyanosawa	Nishi-miyanosawa 2-jo 4-chome 5-35	681-6940	Tue.
Inazumi	Maeda 4-jo 4-chome 2-13	684-3072	Tue. Wed. Thu.
Maeda shirakaba	Maeda 8-jo 15-chome 17-25	694-2474	Tue. Wed. Fri.
Hoshioki	Hoshioki 2-jo 7-chome 3-1	684-4610	Tue. Thu. Fri.
Shin-hassamu	Shin-hassamu 6-jo 4-chome 15-1	685-7343	Tue. Wed. Thu.
Kanayama	Kanayama 3-jo 2-chome 1-30	695-0919	Tue. Wed. Fri.

## ☆ Libraries (Tosho-kan)

The libraries may be closed or relocated due to repair work etc. For more information, please visit the official website of City of Sapporo.

### ★ List of Libraries

#### [Chuo Ward]

Name	Address	Tel
Sapporo Municipal Central Library	Minami 22-jo Nishi 13-chome 1-1	011-512-7320
Sapporo Municipal Central Library Odori Counter	Odori Subway Sta. Concourse (Exit No.5)	011-251-1892
Chuo Ward Community Center Library	Minami 2-jo Nishi 10-chome 1001	011-271-1120
Asahiyama Park Local Center Library	Minami 9-jo Nishi 18-chome 1-32	011-520-1700
Sapporo Municipal Library and Information Center (in Sapporo Community Plaza)	Kita 1-jo Nishi 1-chome	011-208-1113

#### [Kita Ward]

Name	Address	Tel
Shin-kotoni Library	Shin-kotoni 7-jo 4-chome 1-2	011-764-1901
Kita Ward Community Center Library	Kita 25-jo Nishi 6-chome 1-1	011-757-5399
Shin-kotoni & Shinkawa Local Center Library	Shin-kotoni 2-jo 8-chome 1-20	011-765-5910
Takuhoku & Ainosato Local Center Library	Ainosato 1-jo 6-chome 1-1	011-778-8000
Taihei Yurigahara Local Center Library	Taihei 12-jo 2-chome 1-17	011-770-6531
Shinoro Community Center Library	Shinoro 3-jo 8-chome 11-1	011-771-3700

#### [Higashi Ward]

Name	Address	Tel
Motomachi Library	Kita 30-jo Higashi 16-chome 3-13	011-784-0841
Higashi Ward Community Center Library	Kita 11-jo Higashi 7-chome 1-1	011-742-8112
Fushiko Local Center Library	Fusiko 11-jo 3-chome 1-15	011-785-6323
Sakae Local Center Library	Kita 36-jo Higashi 8-chome 1-25	011-704-6005
Naebo & Honcho Local Center Library	Honcho 2-jo 7-chome 2-10	011-784-7833

#### [Shiroishi Ward]

Name	Address	Tel
Higashi-Sapporo Library	Higashi-Sapporo 4-jo 4-chome 1-1	011-824-2801
Picture Book (Ehon) Library	Nangodori 1-chome 8-1, Shiroishi Ward Office Complex 6F	011-866-4646
Shiroishi Local Center Library	Nangodori 1-chome 8-1, Shiroishi Ward Office Complex 6F	011-861-2588
Shiroishi Higashi Local Center Library	Hondori 16-chome Minami 4-27	011-866-3000
Kikusui Motomachi Local Center Library	Kikusui Motomachi 5-jo 2-chome 4-20	011-872-7600
Kita-shiroishi Local Center Library	Kitago 3-jo 7-chome 9-20	011-874-8232

#### [Atsubetsu Ward]

Name	Address	Tel
Atsubetsu Library	Atsubetsu chuo 1-jo 5-chome 3-15	011-894-1590
Atsubetsu nishi Local Center Library	Atsubetsu nishi 4-jo 4-chome 10-1	011-896-2000
Atsubetsu minami Local Center Library	Atsubetsu minami 7-chome 9-1, Shin- Sapporo wakaba Elementary School 4F	011-896-3000
Momijidai Management Center Library	Momijidai Kita 7-chome 1-1	011-897-7431

**[Toyohira Ward]**

Name	Address	Tel
Nishioka Library	Nishioka 3-jo 6-chome 6-1	011-852-8111
Toyohira Ward Community Center Library	Hiragishi 6-jo 10-chome 1-1	011-811-1030
Higashi-tsukisamu Local Center Library	Tsukisamu higashi 3-jo 18-chome 5-1	011-853-2011
Tsukisamu Community Hall Library	Tsukisamu Chuodori 7-chome 8-19	011-851-0482

**[Kiyota Ward]**

Name	Address	Tel
Kiyota Library	Hiraoka 1-jo 1-chome 2-1	011-889-2484
Satozuka & Utsukushigaoka Local Center Library Counter	Satozuka 2-jo 5-chome 1-1	011-888-5005

**[Minami Ward]**

Name	Address	Tel
Sumikawa Library	Sumikawa 4-jo 4-chome 5-6	011-822-3730
Minami Ward Community Center Library	Makomanai Saiwai-machi 2-chome 2-1	011-584-2533
Fujino Local Center Library	Fujino 2-jo 7-chome 2-1	011-592-2002
Moiwa Local Center Library	Kawazoe 8-jo 2-chome 4-15	011-572-5733
Jozankei Liaison Center Library	Jozankei-Onsen Higashi 4-chome 315-4	011-598-2191

**[Nishi Ward]**

Name	Address	Tel
Yamanote Library	Yamanote 4-jo 2-chome 1-20	011-644-6822
Nishi Ward Community Center Library	Kotoni 2-jo 7-chome 1-21	011-641-9080
Nishino Local Center Library	Nishino 4-jo 2-chome 8-30	011-666-5550
Hassamu Local Center Library	Hassamu 10-jo 4-chome 1-1	011-662-8411
Hachiken Local Center Library	Hachiken 6-jo Nishi 2-chome 2	011-611-0966
Welfare Center for Citizens with Physical Disabilities Library	Nijuyonken 2-jo 6-chome 1-1, Sapporo Welfare Center for Citizens with Physical Disabilities	011-641-8850
Media Plaza Library	Miyanosawa 1-jo 1-chome 1-10, Sapporo Comprehensive Lifelong Learning Center "Chieria" *Closed on March 1, 2021 - January 31, 2022	011-671-2121

**[Teine Ward]**

Name	Address	Tel
Akebono Library	Akebono 2-jo 1-chome 2-50	011-685-4946
Shin-hassamu Local Center Library	Shin-hassamu 5jo 4-chome 2-2	011-684-5571
Hoshioki Local Center Library	Hoshioki 2-jo 3-chome 14-1	011-695-3220

**★ Children's Forest (Sapporo Municipal Central Library)**

This section of the Sapporo Municipal Central Library houses picture books, sets of picture story cards used for picture story shows, and children's books, and has a special children's counter. Volunteers give picture book readings.

Location: Minami 22-jo Nishi 13-chome 1-1, Chuo-ku

Hours: Mon. – Fri. 9:15 – 20:00 / Sat., Sun. & National Holidays 9:15 – 17:00

Closed: 2<sup>nd</sup> & 4<sup>th</sup> Wednesday, the Year-end and New Year's Holidays

◆ Inquiries: Sapporo Municipal Central Library ☎ 011-512-7320



## Community Childcare Support

### ★ Local welfare commissioners, children's social workers and chief children's social workers

These individuals provide consultations on life, children and welfare, acting as liaisons between relevant administrative agencies and people in the region. To reach the commissioner and social workers of the region, please inquire.

◆ Inquiries: Regional Ward Office (Social Work Promotion Section) p.70-71

### ★ Childcare volunteers

Local residents volunteer to help parents with childcare. On individual or group basis, these volunteers engage in various activities such as working at childcare salons, reading picture books aloud, and other activities relating to city programs.

Inquiries: - Regional ward Day Care & Child-rearing Support Center (Cheerful) p. 3  
- Center for Early Childhood Education and Care "Nijihiro" p. 3  
- Regional ward Childcare Information Center p.16  
- Sapporo Childcare General Support Center p. 3

### ★ Childcare seminars

Seminars are provided for parents to learn about the healthy development of infants and young children, the roles of parents/families and the relationship between parents and children, so that they can raise their children without anxiety. Information on venues and hours is available in the city's monthly public relations magazine.

Inquiries: - Regional ward Day Care & Child-rearing Support Center (Cheerful) p. 3  
- Center for Early Childhood Education and Care "Nijihiro" p. 3  
- Regional ward Childcare Information Center p.16  
- Childcare General Support Center p. 3

### ★ Home education class

Participants in this class learn about education in the home in a systematic and continuous manner. Topics include ways to interact with children, child development stages in relation to the mind and body, and the role of parents. Participants can also plan their own study program, select lecturers to serve as speakers, and so forth.

\*Some kindergartens and schools do not offer a home education class. For further details, including information on how to request the opening of such a class, please inquire with the section below.

◆ Inquiries: Lifelong Learning Promotion Section, Board of Education ☎ 011-211-3872

### ★ Childcare groups ("Kosodate Circle")

Parents raising children gather for activities in parks or kids' halls. Regional ward office's Childcare Support Division gives advice on running a group, introduces games and other fun activities, lends play equipment and provides opportunities for groups to interact with each other and learn about childcare. It also provides information on registered childcare groups.

Inquiries: - Regional ward office Day Care & Child-rearing Support Center (Cheerful) p. 3  
- Center for Early Childhood Education and Care "Nijihiro" p. 3  
- Regional ward Childcare Information Center p.16

## New Comprehensive Support System for Children and Child-rearing

This system, which began from April 2015, is aimed at improving the quality and quantity of early childhood education, childcare, and child and child-rearing support services in local communities. It covers all children and child-rearing households.

### ☆ Available Support Services

#### ★ Guardian support

Nursery staff help to solve problems or concerns on raising children via phone counseling and home visit.

#### ● Information Service

Relevant information including facilities such as kindergartens and nurseries, local support services are provided to ensure that child-rearing households can use a wide variety of available support services in accordance with their household childcare needs. Also the support will be provided in association with relevant organizations or agents if necessary.

#### ● Counseling

Nursery staff provide counseling, advice and assistance suiting user's situations or concerns.

##### ◆ Inquiries:

Child Care General Support Center p.3

Day Care & Child-rearing Support Center at the individual wards ("Cheerful") p.3

Center for Early Childhood Education and Care "Nijihiro" p.3

Regional ward Childcare Information Center p.16



#### ★ Home-visit consulting service:

Nursery staff visit child-rearing households to provide childcare consultation services.

##### ◆ Inquiries:

Day Care & Child-rearing Support Center in individual wards ("Cheerful") p.3

Center for Early Childhood Education and Care "Nijihiro" p.3

Regional ward Childcare Information Center p.16

# ★ Childcare Information Center “Kosodate Information”

Child Care Information provide support such as childcare information and consultations, hold childcare seminars and facilitate childcare groups. These centers also provide access to materials and picture books, as well as lend them out.



Ward	Address	Tel (General)	Phone Consultation
Chuo Ward	Minami 3-jo Nishi 11-chome	011-511-6399	011-533-0874
Kita Ward	Kita 25-jo Nishi 6-chome	011-757-2566	011-756-0874
Higashi Ward	Kita 10-jo Higashi 7-chome	011-712-6331	011-712-0874
Shiroishi Ward	Nango-dori 1-chome-minami	011-861-0345	011-861-0874
Atsubetsu Ward	Atsubetsu-chuo 1-jo 5-chome	011-895-2514	011-894-0874
Toyohira Ward	Hiragishi 6-jo 10-chome	011-822-2474	011-812-0874
Kiyota Ward	Hiraoka 1-jo 1-chome	011-889-2052	011-885-0874
Minami Ward	Makomanai Saiwai-machi 1-chome	011-588-5411	011-584-0874
Nishi Ward	Kotoni 2-jo 7-chome	011-641-6954	011-643-0874
Teine Ward	Maeda 1-jo 11-chome	011-681-1342	011-691-0874



Chuo



Kita



Higashi



Shiroishi



Atsubetsu



Toyohira



Kiyota



Minami



Nishi



Teine

### **Permanent Childcare Salons (Community Childcare Support Centers)**

Easily accessible local facilities at which parents and children can freely interact and parents can receive childcare consultation services.

Local organizations, NPOs or other bodies serve as service providers at various places such as public facilities. \*Related pages: “Going Out with Children” (p.3-13)

### **★ Temporary care**

Temporary care services are available to guardians to accommodate various household childcare needs, such as childcare required due to unexpected business or short-term part-time employment.

\* For further details, see “Leaving a Child in Someone’s Care Temporarily” (p.48)

### **★ Childcare for Children and Infants Recovering from Illness**

If children who are recovering from illness cannot be looked after at home, they can be temporarily taken care of at facilities attached to medical institutions in the city.

\* For further details, see “Day Service for Children and Infants Recovering from Illness” (p.49)

### **★ Family Support Centers (Support Program for Child-rearing Assistance Activities)**

This is a system that supports families raising children by establishing membership organizations consisting of parents who need help with childcare and people who wish to assist such parents.

\* For further details, see “Sapporo Family Support Center Program” (p.49)

### **★ Home-visiting Childcare Support**

Health nurses from health centers or other professional staff visit households requiring continuous childcare support to provide guidance, advice, and other assistance.

### **★ Visits to All Families with a Baby**

Health nurses or instructors from health centers visit all homes with babies aged four months or younger to provide childcare consultations and health guidance. (p.64)

### **★ After-school Children’s Clubs**

Children (i.e., elementary school students) whose parents are not at home during the day can spend after-school hours at places such as spare classrooms in elementary schools or kids’ halls.

\*For further details, see “Support Program for Elementary School Children” (p.47).

### **★ Short-term Childcare Support Program (Kodomo Short Stay)**

If parents cannot look after their children temporarily due to sickness, childbirth, nursing care, an accident, a business trip or a ceremonial event, the children can be taken care of at a foster home or infant home.

\*For further details, see “Short-term Childcare Support Program (Kodomo Short Stay)” (p.50).

## ☆ Available Educational/Childcare Facilities

### ★ Centers for early childhood education and care

Facilities that provide integrated services for early childhood education and childcare

\*For further details, see “Centers for Early Childhood Education and Care” (p.19-24).

### ★ Kindergartens

Schools that provide early childhood education to establish a foundation for education provided at elementary school and higher education.

### ★ Day Care centers

Facilities where young children in need of childcare are looked after in place of their parents.

\*For further details, see “Public Day Care Centers and Authorized Day Care Centers” (p.27-37).

### ★ Community-based childcare programs

Childcare services, such as family-style day-care services (which provide childcare to a small number of children in a homelike environment), small-scale childcare services and employer-provided childcare services. \*for further details, see “Community-based Childcare Programs” (p.38-45).

## ☆ Certification for the new system

Any user of a kindergarten, day care center, community-based childcare programs, and unauthorized day care centers (empire-provided childcare services “Jigyosho-nai hoiku jigyo”) etc. that joins the new system is required to obtain certification from the municipal government in his/her area.

### - Three Types of Certification -

Type 1 Certification:	Type 2 Certification:	Type 3 Certification:
Four-hour use	Eight- or eleven-hour use	Eight- or eleven-hour use
When a preschool child aged 3 years or older uses a kindergarten or center for early childhood education and care (with kindergartens functions)	When a preschool child aged 3 years or older who needs childcare uses a day care center or center for early childhood education and care (with day care center functions)	When a child under 3 years old who needs childcare uses a day care center, center for early childhood education and care (with day care center functions) or community-based childcare programs

- ◆ Free early childhood education and care has begun from October 2019. Please contact us for more information on the application process and eligibility.
- ◆ Inquiries regarding applications for certification for the new system:  
Child-rearing Promotion Section, Bureau for the Future of Children ☎ 011-211-2346
- Regional ward office (Children & Family Welfare Division) p.70-71



## Centers for Early Childhood Education and Care “Nintei Kodomo-en”

A Center for Early Childhood Education and Care (“Nintei Kodomo-en”) is a childcare support facility that combines the advantages of kindergartens and day care centers as well as provides integrated services for early childhood education and childcare. Childcare fees are determined according to the residential tax amount of each household. \*Childcare fees for children in 3 year-old classes or older are free of charge.

### Three advantages

1. Regardless of the employment status of the parents, any child between the ages of three and five years old may receive both education and childcare.
2. Even when the employment status of the parents changes, such as when parents stop working, their children may continue using the same center they are used to.
3. Since child-rearing support services are available, even families whose children do not attend the centers can use child-rearing consultation services and participate in events such as interactive gatherings for parents and children.

\*For further details about temporary care, see p.49

\*Eligible ages and opening hours vary by center. For further details, see the List of Centers for Early Childhood Education and Care (p.19-24).

◆ Inquiries: Facilities Management Section, Bureau for the Future of Children ☎ 011-211-2986

### ★ List of Centers for Early Childhood Education and Care (“Nintei Kodomo-en”) as of Apr. 1, 2021 ★ Public CECEC

#### ★ Children’s age groups ★

**1Y:** preschoolers aged 1 year old and older (The children’s age is counted in full as of April 2<sup>nd</sup>.)

**2Y:** preschoolers aged 2 years old and older (The children’s age is counted in full as of April 2<sup>nd</sup>.)

**3Y:** preschoolers aged 3 years old and older (The children’s age is counted in full as of April 2<sup>nd</sup>.)

※Some facilities available for 3 years old. For further details, inquire at facility

**5M:** preschoolers aged 5 months old and older

**57D:** Childcare after maternity leave (57 days old and older)

#### ★ Extended-time childcare / Temporary childcare ( T )

**1:** extended childcare for one hour later than the regular time

**2:** extended childcare for two hours later than the regular time

**T:** temporary care general Kindergarten (All kindergartens provide this care)

#### ★ Childcare hours ★

<b>Regular-time childcare certification</b>	11 hours from 7:00 – 18:00 *Tsuyoshi, Nakanoshima & Teine Sapporo Academy: 11hours from 7:30 - 18:30
<b>Short-time childcare certification</b>	8 hours between 8:00 and 17:00 determined by the center for early childhood education

#### ★ Types of Centers for Early Childhood Education and Care ★

**KD:** Authorized kindergarten-daycare center: Facilities which provide education to 3 years old as well as temporary childcare services

**D:** Authorized day care center: Authorized day care centers with kindergarten functions, i.e. provision of early childhood education

**K:** Authorized Kindergarten: Kindergartens with day care center functions

**L:** Local discretion: Local discretion facilities (unauthorized local educational/childcare facilities with necessary functions that serve as centers for early childhood education and care)

### [Chuo Ward]

Name	Address	Tel	Age groups	Ext / Temp	Childcare hours	Type
Otani Oasis	Odori Nishi 21-chome 3-18	621-9888	57D	1 / T	8:30-16:30	KD
Catholic garden Kodomo no ie	Kita 1-jo Higashi 6-chome 10-41	221-3493	5M	1 / T	8:00-16:00	KD
Sapporo Otani	Minami 7-jo Nishi 7-chome 290-2	511-3838	5M	1 / T	8:00-16:00	KD
Kosai Sorairo	Minami 9-jo Nishi 20-chome 2-22	563-2233	5M	1 / T	8:00-16:00	KD
Miyanomori Maple	Miyanomori 4-jo 10-chome 1-7	792-6003	5M	1 / T	8:00-16:00	KD
Sapporo	Minami 1-jo Higashi 7-chome 2-15	251-1555	57D	1 / T	9:00-17:00	D
Tsubomi	Minami 7-jo Nishi 25-chome 1-5	561-7534	3Y	1	9:00-17:00	K
Mommy Pokke	Minami 2-jo Higashi 1-chome 1-12	207-8888	57D	1 / T	9:00-17:00	L

### [Kita Ward]

Name	Address	Tel	Age groups	Ext / Temp	Childcare hours	Type
Ainosato Ofuji	Ainosato 3-jo 3-chome 1-2	778-2911	5M	1 / T	8:00-16:00	KD
Ainosato	D: Ainosato 3-jo 6-chome 1-6 K: Ainosato 4-jo 6-chome 2-5	778-7272	5M	1 / T	8:00-16:00	KD
Sosei Sapporo	Kita 15-jo Nishi 1-chome 2-18	736-5245	5M	1	8:00-16:00	KD
Integrated centers for early childhood education and care CinqPerles Kindergarten	Sinoro 7-jo 6-chome 3-8	771-4044	57D	1 / T	8:30-16:30	KD
Shin-Kotoni Seika	Shin-Kotoni 11-jo 5-chome 1-30	761-0308	57D	1 / T	8:00-16:00	KD
Kohoku	Shin-Kotoni 12-jo 10-chome 3-17	761-4134	5M	1 / T	8:00-16:00	KD
Hanazono	Shinkawa 1-jo 2-chome 8-10	790-7530	5M	1 / T	8:00-16:00	KD
Shinkawa-Nishi Sakurako	Shinkawa Nishi 1-jo 4-chome 2-45	763-3905	57D	1 / T	8:30-16:30	KD
Taihei Azusa	Taihei 4-jo 3-chome 2-33	776-5000	5M	1 / T	8:00-16:00	KD
Kodomo-en Soreiyu	Takuhoku 3-jo 2-chome 7-12	776-3939	57D	1 / T	8:30-16:30	KD
Himawari	Takuhoku 6-jo 2-chome 6-12	788-3235	5M	1 / T	8:00-16:00	KD
Merci-Gakuin	Tonden 5-jo 9-chome 1-46	792-8680	57D	1 / T	8:30-16:30	KD
Taiyo Kokoro Kindergarten	Tonden 9-jo 3-chome 3-9	776-7774	5M	1 / T	8:00-16:00	KD
Horokita Chuo	Kita 20-jo Nishi 3-chome 2-22	716-1841	57D	1 / T	8:00-16:00	D
Shizuku	Kita 24-jo Nishi 15-chome 1-1	737-8000	57D	1 / T	8:00-16:00	D
Angel	Kita 36-jo Nishi 2-chome 1-3	790-8187	5M	1 / T	8:00-16:00	D
Momo no hana	Tonden 9-jo 3-chome 1-35	776-0087	57D	1 / T	8:00-16:00	D
Sapporo Mirai	Tonden 9-jo 10-chome 1-1	774-3612	57D	1 / T	8:00-16:00	D
Sapporo Kita	Kita 33-jo Nishi 11-chome 3-10	726-3412	3Y	-	8:00-16:00	K

**[Kita Ward]**

Name	Address	Tel	Age groups	Ext / Temp	Childcare hours	Type
Sapporo Kita	Kita 33-jo Nishi 11-chome 3-10	726-3412	3Y	-	8:00-16:00	K
Shin-Kotoni	Shin-Kotoni 8-jo 3-chome 1-20	761-9298	3Y	1	8:00-16:00	K
Tsuyoshi	Tonden 3-jo 3-chome 6-10	771-4123	3Y	-	8:00-16:00	K
Barato Merry Kindergarten	Higashi-barato 37-3	774-2767	3Y	1	8:00-16:00	K
Eishin Yochi Gakuin	Shin-Kotoni 12-jo 16-chome 12-12	764-2423	1Y	1	8:30-16:30	L

**[Higashi Ward]**

Name	Address	Tel	Age groups	Ext / Temp	Childcare hours	Type
Seimei no Mori	Kita 10-jo Higashi 14-chome 2-8	721-6750	5M	1 / T	8:00-16:00	KD
Sapporo Yume	Kita 36-jo Higashi 17-chome 1-30	783-9614	57D	1 / T	8:30-16:30	KD
Okadama no Mori	Kita 37-jo Higashi 27-chome 1-1	783-2233	5M	1 / T	8:00-16:00	KD
Sapporo Aisyu	Kita 38-jo Higashi 9-chome 1-38	K:721-2253 D:750-1123	5M	1	8:30-16:30	KD
Eiko	Kita 44-jo Higashi 2-chome 1-20	731-4681	5M	1 / T	8:00-16:00	KD
Shirayuki Yume	Kita 46-jo Higashi 14-chome 2-10	731-9614	57D	1 / T	8:30-16:30	KD
Satsunae no Mori	Higashi-Naebo 8-jo 3-chome 3-20	K:791-3703 D:791-2233	5M	1 / T	8:00-16:00	KD
Moere no Mori	Higashi-Naebo 11-jo 2-chome 7-1	790-1080	5M	1 / T	8:00-16:00	KD
Higashi-Naebo sparkle	Higashi-Naebo 12-jo 4-chome 8-40	776-6276	5M	1 / T	8:30-16:30	KD
Fushiko	Honcho 1-jo 5-chome 1-15	781-1691	5M	1 / T	8:00-16:00	KD
Kousei Yuai	Kita 12-jo Higashi 9-chome 3-12	712-8883	57D	1 / T	8:00-16:00	D
Kaisei Ichii	Kita 21-jo Higashi 23-chome 3-1	788-3961	57D	1 / T	8:30-16:30	D
Hokuei Muscat	Kita 30-jo Higashi 9-chome 3-20	731-0120	57D	1 / T	8:00-16:00	D
Okadama Muscat	Kita 36-jo Higashi 29-chome 3-3	783-0723	57D	1 / T	8:00-16:00	D
Sakaemachi Muscat	Kita 37-jo Higashi 14-chome 1-25	748-7875	57D	1 / T	8:00-16:00	D
Nakanuma	Nakanuma-cho 72-7	790-4545	57D	1 / T	8:30-16:30	D
Fushiko Kashiwa	Fushiko 4-jo 4-chome 2-9	782-9130	57D	1 / T	8:30-16:30	D
Honcho	Honcho 1-jo 6-chome 1-5	785-8834	57D	1 / T	8:30-16:30	D
Higashi Naebo	Honcho 2-jo 6-chome 3-7	781-8389	57D	1	8:30-16:30	D
St. Michael Kindergarten	Kita 19-jo Higashi 3-chome 4-5	731-8705	-	3Y	8:30-16:30	K
Castanet	Kita 42-jo Higashi 15-chome 1-23	733-5303	5M	2 / T	9:00-17:00	L



**[Shiroishi Ward]**

Name	Address	Tel	Age groups	Ext / Temp	Childcare hours	Type
Hokuto Yochien	Kawashimo 749-55	875-6661	5M	1 / T	8:00-16:00	KD
Azuma-bashi Ichii	Kikusui 8-jo 2-chome 1-1	837-7211	57D	1 / T	8:30-16:30	KD
Kikusui Ichii	Kikusui Motomachi 1-jo 1-chome 4-18	873-8001	57D	1 / T	8:00-16:00	KD
Piccolino Gakuin	Kitago 1-jo 6-chome 1-25	376-1181	57D	1 / T	8:00-16:00	KD
Kitago Pinocchio	Kitago 2-jo 6-chome 5-12	871-7014	5M	1 / T	8:30-16:30	KD
Kitago Ayumi	Kitago 3-jo 3-chome 8-15	876-6200	5M	1 / T	8:00-16:00	KD
Integrated centers for early childhood education and care Kitago Kindergarten	Kitago 4-jo 5-chome 6-12	873-3551	1Y	1 / T	9:00-17:00	KD
Hokuto	Kitago 4-jo 11-chome 20-7	874-9382	57D	1 / T	8:30-16:30	KD
Kitago Suzuran	Kitago 7-jo 3-chome 12-25	879-1717	57D	1 / T	8:00-16:00	KD
Futaba	Sakae-Dori 15-chome 15-18	851-7463	57D	1 / T	8:30-16:30	KD
Hisho	Higashi-Sapporo 1-jo 4-chome 7-19	820-8880	57D	1 / T	8:00-16:00	KD
Koto	Hongo-dori 3-chome-kita 3-11	K: 864-6246 D: 864-0111	5M	1 / T	8:30-16:30	KD
Yuai Kita-Shiroishi	Yonesato 2-jo 4-chome 2-16	875-0180	57D	1 / T	8:00-16:00	KD
Higashikawashimo Poppo	Kawashimo3-jo 5-chome 3-28	871-3629	57D	1 / T	8:30-16:30	D

**[Atsubetsu Ward]**

Name	Address	Tel	Age groups	Ext / Temp	Childcare hours	Type
Hibarigaoka Myojo	Atsubetsu-chuo 2-jo 4-chome 1-10	891-2617	5M	1 / T	8:30-16:30	KD
Daini Atsubetsu Kindergarten	Atsubetsu nishi 3-jo 4-chome 1-5	892-2086	5M	1 / T	8:30-16:30	KD
Sakuradai Ichii	Atsubetsu-nishi 611-520	895-3331	57D	1	8:00-16:00	KD
Atsubetsu Sakuragi	Atsubetsu-higashi 3-jo 1-chome 2-8	898-6200	5M	1 / T	8:30-16:30	KD
Oyachi	Oyachi-higashi 3-chome 5-11	K: 891-0111 D: 801-5600	57D	1 / T	8:00-16:00	KD
Shin-sapporo	K: Kami-Nopporo 1-jo 2-chome 6-1 D: Kami-Nopporo 1-jo 2-chome 6-20	K: 894-6160 D: 890-7171	5M	1 / T	8:00-16:00	KD
Ichii	Momijidai-nishi 5-chome 3	897-1311	57D	1 / T	8:00-16:00	KD
Sapporo Aoba	Atsubetu-Kita 3-jo 5-chome 11-6	893-6121	3Y	-	8:30-16:30	K
Momijidai	Momijidai-kita 5-chome 6-1	897-2709	3Y	1 / T	8:00-16:00	K

### [Toyohira Ward]

Name	Address	Tel	Age groups	Ext / Temp	Childcare hours	Type
Tsukisamu Sorairo	Tsukisamu Nishi 4-jo 6-chome 4-1	595-8312	5M	1 / T	8:00-16:00	KD
Shinonome	Tsukisamu Higashi1-jo 2-chome 10-9	851-4536	1Y	1 / T	8:30-16:30	KD
Higashi Tsukisamu Nire	Tsukisamu Higashi 3-jo 16-chome 2-36	853-6644	57D	1 / T	8:30-16:30	KD
Hikari no ko Sapporo	Tsukisamu-higashi 4-jo 9-chome 1-11	851-1855	57D	1 / T	8:00-16:00	KD
Nire Daini	Tsukisamu Higashi 5-jo 16-chome 8-14	851-3525	57D	1 / T	8:30-16:30	KD
Sapporo Kodomoen	Toyohira 6-jo 3-chome 6-35	811-4991	57D	1 / T	8:30-16:30	KD
Korittsu	Nishioka1-jo 7-chome 2-20	374-5282	57D	1 / T	8:30-16:30	KD
Manabi	Nishioka 3-jo 5-chome 1-1	853-1231	5M	1 / T	8:00-16:00	KD
Hiragishi Kindergarten	Hiragishi 3-jo 12-chome 3-9	811-0946	5M	1 / T	8:00-16:00	KD
Nakanoshima Smile	Hiragishi 1-jo 2-chome 7-30	832-2288	5M	1 / T	9:00-17:00	D
Hiragishi Yuai	Hiragishi 2-jo 6-chome 1-14	374-5670	57D	1 / T	8:00-16:00	D
Nakanoshima	Nakanoshima 2-jo 2-chome 5-20	821-7414	3Y	T	8:00-16:00	K

### [Kiyota Ward]

Name	Address	Tel	Age groups	Ext / Temp	Childcare hours	Type
Kitano Shirakaba	K: Kitano 5-jo 2-chome 2-20 D: Kitano 5-jo 2-chome2-21	K: 881-8686 D: 881-7711	5M	1 / T	8:00-16:00	KD
SIU (Sapporo International Univ) Kodomo-en	Kiyota 4-jo 2-chome 1-30	881-3611	5M	1 / T	8:30-16:30	KD
Tsumiki	Satozuka 1-jo 1-chome 14-8	884-5756	5M	1 / T	8:00-16:00	KD
Karamatsu	Satozuka 2-jo 2-chome 4-12	889-3000	57D	1 / T	8:00-16:00	KD
Hanayama	Satozuka Midorigaoka 3-chome 8-1	886-0415	57D	1 / T	8:00-16:00	KD
Nijiirō ★	Shinei 2-jo 1-chome 11-20	883-3345	57D	1 / T	8:00-16:00	P(KD)
Alps	Hiraoka 4-jo 3-chome 6-43	886-8011	5M	1 / T	8:30-16:30	KD

### [Minami Ward]

Name	Address	Tel	Age groups	Ext / Temp	Childcare hours	Type
Sumikawa Hironobu	Sumikawa 2-jo 1-chome 3-1	831-6006	5M	1 / T	8:30-16:30	KD
Sorairo	Sumikawa 6-jo 11-chome 2-10	588-1152	5M	1 / T	8:00-16:00	KD
Koen Gakuen Women's Junior College	Makomanai kamimachi 3-chome 1-1	581-6533	5M	1	8:00-16:00	KD
Tokiwa minami-no K odomoen	Makomanai 380-2	591-0123	5M	1 / T	8:30-16:30	KD
Sapporo Ishiyama	Ishiyama 1-jo 4-chome 8-26	591-6934	5M	1 / T	8:00-16:00	D
Moiwa Chuo	Kawazoe 6-jo 3-chome 1-14	571-1905	5M	1 / T	8:00-16:00	D

### [Nishi Ward]

Name	Address	Tel	Age groups	Ext / Temp	Childcare hours	Type
Hassamu Nikorin	Hassamu 5-jo 3-chome 8-12	661-2927	5M	1	8:00-16:00	KD
Nishino Sorairo	Nishino 4-jo 7-chome 1-8	667-3345	5M	1 / T	8:00-16:00	KD
Nishino	Nishino 7-jo 2-chome 1-45	663-3333	5M	1 / T	8:00-16:00	D
Sapporo-nishi Yuai	Nijuyonken 1-jo 7-chome 1-3	676-6762	57D	1 / T	8:00-16:00	D
Kagayaki	Hachiken 7-jo Nishi 11-chome 2-15	618-2288	5M	1 / T	8:00-16:00	D
Nishimachi Satsuki	Nishimachi Minami19-chome 1-14,	662-9930	5M	1 / T	8:00-16:00	KD
Mori no Tartan Miyanosawa	Hassamu 6-jo 10-chome 1-3	666-2077	5M	1 / T	8:00-16:00	L

### [Teine Ward]

Name	Address	Tel	Age groups	Ext / Temp	Childcare hours	Type
Teine Asunaro	Akebono 5-jo 3-chome 2-25	691-2346	57D	1 / T	8:30-16:30	KD
Sannoh	Akebono 9-jo 1-chome 9-15	683-2877	5M	1 / T	8:00-16:00	K
Matsuba no Mori	Shin-Hassamu 5-jo 9-chome 3-24	683-8931	57D	1 / T	8:30-16:30	KD
Hoshioki Pinocchio	Hoshioki 1-jo 1-chome 20-1	686-8377	5M	1 / T	8:30-16:30	KD
Hoshi no ko	Hoshioki 3-jo 8-chome 1-10	683-1675	57D	1 / T	8:00-16:00	K
Maeda	Maeda 5-jo 7-chome 2-15	681-5310	5M	1 / T	8:00-16:00	KD
Teine Sapporo Academy	Maeda 13-jo 10-chome 18-15	685-7328	2Y	-	9:00-17:00	L

## Kindergartens “Yochi-en”

A kindergarten (“Yochi-en”) is a facility that provides early childhood education to children 3 years old or older to establish a foundation for education provided at elementary school and higher education.

Procedures and childcare fees differ depending on whether or not the kindergarten falls under the new system.

\*For further details, inquire with kindergartens.

### ◆ Inquiries about kindergartens:

Municipal: Education Promotion Section, Board of Education ☎ 011-211-3851

Preschool Education Center ☎ 011-671-3454

Private: Sapporo Private Kindergarten Federation ☎ 011-671-3590



## Day Care Centers ( "Hoikusho" )

A day care center ( "Hoikusho" ) is a facility where infants and young children are looked after if their parents cannot take care of them at home due to employment or other circumstances. Childcare fees are determined according to the child's age, the residential tax amount of each household and other factors.

※There is no charge for children 3 years and older (class age).

### ☆ Day Care Centers

Eligible ages and opening hours vary by day care center. For further details, see the List of Day Care Centers.

#### ★ Temporary care

This service is available at day care centers on a daily basis in the following cases (prior application is required):

- (a) In the event childcare becomes necessary due to part-time employment, job training or similar circumstances.
- (b) In the event childcare becomes necessary due to the parents' involvement in a disaster/accident, childbirth, a ceremonial event, nursing care or similar situation.
- (c) In the event childcare becomes necessary to reduce the psychological/physical burden on parents (for refreshment) \*For further details, inquire with day care centers providing such services.

#### ★ Holiday childcare

Childcare is available on Sundays and national holidays if parents have Type 2 or Type 3 Certification and their children go to authorized day care centers or centers for early childhood education and care, or they use community-based childcare programs.

\*Please contact the individual facilities for details.

#### 【Day Care Centers offering Holiday Childcare】

Name	Tel
Kita Ward Day Care & Child-rearing Support Center	☎ 011-757-5380
Toyohira Ward Day Care & Child-rearing Support Center	☎ 011-851-3945
Nishi Ward Day Care & Child-rearing Support Center	☎ 011-621-1503
Kita 1-Jo Suzuran Hoikuen (Chuo Ward)	☎ 011-213-1448
Sapporo Kita Hagu-hagu Hoikuen (Kita Ward)	☎ 011-768-8003
Motomachi Niko-niko Day Care Center (Higashi Ward)	☎ 011-782-2551
Nikomaru Shiroishi (Shiroishi Ward)	☎ 011-850-9686
Aoba Kosei Day Care Center (Atsubetsu Ward)	☎ 011-891-5202

#### ◆ Inquiries:

- Facility Operation Division, Bureau for the Future of Children ☎ 011-211-2986
- Regional ward office (Children & Family Welfare Division) p.70-71

# ☆ List of Day Care Centers ( "Hoikusho" ) as of April 1, 2021

## ☆ Public Day Care Centers

\* For further details about children's age groups and other categories and shortened childcare, see below.

### ★Children's age groups★

See the colored section for age

**57D:** childcare after maternity leave (57 days old and older)

**5M:** aged 5 months old and older

**1Y10 M:** aged 1 year and 10 months old and older

**U2Y:** aged under 2 years old.

**2Y:** aged 2 years old as of April 1, 2019  
and under

### ★ Extended-time childcare (Ext.)★

**1:** extended childcare1 (extended hours: 18:00 - 19:00)

**2:** extended childcare2 (extended hours: 18:00 - 20:00)

**3:** extended childcare3 (facility opens 10:00 – 24:00, extended 3hours after regular time)

**4:** extended childcare4 (facility opens 10:00 - 22:00, early check in 2hours before regular time)

### ★Temporary childcare (Temp.)★

Temporary childcare (some facilities set age limits)

### ★Childcare hours★

<b>Regular-time childcare certification</b>	11 hours from 7:00 – 18:00 *11 hours from 7:30 to 18:30 only at Yu-Wing in Minami-ward. *Night-time childcare: 10:00-21:00
<b>Short-time childcare certification</b>	8 hours between 8:00 and 17:00 determined by the daycare center. *Night-time childcare: 13:00-21:00

### ★ Holiday childcare ( Holiday )★

#### 【Chuo Ward】

Name of facilities	Address	Tel	Age groups	Ext./ Temp	Hours	Remarks
Sapporo Kodomo	Odori Nishi 9 1-12	272-8891	57D	1	8:30-16:30	
Nichii Kids Odori-nishi 18-chome	Odori Nishi18 2-7	633-7121	57D	1 / T	8:30-16:30	
Piccoro Kodomo Club Maruyamaen	Odori Nishi 26 3-5	590-0848	57D	2 / T	8:30-16:30	
Takasago Nursery School Odori Park	Odori Higashi2 3-1	215-0944	57D	1 / T	8:00-16:00	
Sapporo-shi Odori	Odori Higashi4 5-1	222-6112	57D	1 / T	8:00-16:00	
Sapporo-shi Odori Yakan	Odori Higashi4 5-1	222-6112	57D	3・4	13:00-21:00	
Sapporo Tokeidai Kirara	Kita1 Nishi2 1	218-3868	57D	1 / T	8:30-16:30	
Komadori	Kita1 Higashi8 1-41	251-9398	5M	1 / T	8:00-16:00	
Kita1-jo Suzuran	Kita1 Higashi10 15-82	213-1448	5M	2 / T	8:30-16:30	Holiday
Sapporo Heidii Naebo Room	Kita3 Higashi13 99-6	219-0808	5M	1 / T	9:00-17:00	

**【Chuo Ward】**

Name of facilities	Address	Tel	Age groups	Ext./Temp	Hours	Remarks
Tsukushinoko Kyodo	Kita4 Nish14 1-25	281-2945	57D	2 / T	9:00-17:00	
Taiyonoko Sapporo Chuo	Kita 4 Nishi 16 1	590-0697	57D	2 / T	9:00-17:00	
Sapporo Maruyama Park Kirara	Kita 4 Nishi 23 1-1	633-7002	57D	1 / T	8:30-16:30	
Art Childcare Sapporo Soen	Kita5 Nishi12 6-1	231-0125	57D	1 / T	9:00-17:00	
Kyuseigun Soen	Kita5 Nishi14 1-29	221-6630	57D	1	8:00-16:00	
Maruyama Kitamachi	Kita5 Nishi27 3-1	611-4991	5M	1	8:30-16:30	
Chairekku Kita 7-jo Nishi	Kita7 Nishi22 2-5	215-9188	57D	2 / T	8:30-16:30	
Ask Soen	Kita8 Nishi18 35-100	640-5828	5M	1 / T	9:00-17:00	
Kodomo Plaza Aoi Tori	Kita9-jo Nishi 23-chome 1-23	642-3878	57D	1 / T	8:30-16:30	
Yoshida Gakuen Kurinoki	Kita11 Nishi17 36-122	676-8332	57D	1 / T	8:30-16:30	
Sapporo-shi Shiseikan	Minami3 Nishi7 1-1	204-9560	57D	1 / T	8:00-16:00	
Sapporo-shi Shiseikan Yakan	Minami3 Nishi7 1-1	204-9560	57D	1・4	13:00-21:00	
NOVA International school	Minami3 Higashi2-1	804-4655	5M	1	8:00-16:00	
Sayori	Minami4 Nishi15 1-35	561-9696	57D	1	8:30-16:30	
Aiiku	Minami7 Nishi18 3-29	551-3247	57D	1	8:00-16:00	
Nichii kids Minami Maruyama	Minami9 Nishi23 2-15	530-5310	57D	1 / T	8:30-16:30	
★Sapporo-shi Akebono	Minami 11 Nishi10 1-3	511-0447	1Y10M	1	8:00-16:00	
Yamahana	Minami12 Nishi8 3-16	511-4612	5M	1 / T	9:00-17:00	
Kosai	Minami12 Nishi16 1-5	520-8008	57D	1 / T	8:00-16:00	
Asahigaoka	Minami13 Nishi23 1-40	551-8588	57D	1 / T	8:00-16:00	
Keimei Tomoiki	Minami14 Nishi18 6-5	561-5151	5M	1 / T	8:00-16:00	
Yamahana Hanazono	Minami18 Nishi11 1-2	563-6624	57D	1 / T	8:30-16:30	
Art Childcare Sapporo Yamahana	Minami 19 Nishi 12 2-12	206-1230	57D	1	8:30-16:30	
Yamahana Himawari	Minami 19-jo Nishi 7-chome 2-22	522-9618	5M	1 / T	8:30-16:30	
Konan Hanazono	Minami23 Nishi10 1-25	551-7511	57D	1 / T	8:30-16:30	
Miyanomori	Miyanomori2-5 2-20	642-0012	57D	1	9:00-17:00	
Miyanomori lilac	Miyanomori 3-3 4-18	699-5899	57D	1 / T	8:30-16:30	
Fushimi	Fushimi 1-chome 2-14	215-1632	5M	1 / T	8:00-16:00	

**【Kita Ward】**

Name of facilities	Address	Tel	Age groups	Ext./Temp	Hours	Remarks
Ainosato Daini Kyodo	Ainosato1-6 1-15	792-1152	57D	1 / T	8:00-16:00	
Ainosato	Ainosato2-2 12-4	778-1088	57D	1	8:30-16:30	
Ainosato Seseragi	Ainosato3-7 2-6	299-3783	5M	1	8:30-16:30	
Sapporo Hakobune	Kita7 Nishi6 2-33	737-3535	57D	1	8:30-16:30	
Aiwa Elm	Kita8 Nishi3 32	736-5243	57D	2	8:30-16:30	
Nichii Kids Sapporo	Kita 9 Nishi 3 15	700-0111	57D	1 / T	8:30-16:30	
Kodomono Sono	Kita11 Nishi5	706-4588	57D	1 / T	8:30-16:30	
Art Childcare Hokudaimae	Kita12 Nishi4 1-25	728-3555	5M	1	8:30-16:30	
Pikkoro Kodomo Club Hokudaimae	Kita15Nishi5 1-5	790-7957	5M	1 / T	8:30-16:30	
Horokita Yurikago	Kita18 Nishi7 1-3	746-3301	57D	1	8:30-16:30	
★Kita Ward Day Care & Child-rearing Support Center	Kita25 Nishi3 3-3	757-5380	57D	1 / T	8:00-16:00	Holiday
Hakuyo Midori	Kita 25 Nishi 6 1-10	768-8418	57D	2 / T	9:00-17:00	
Hagukumi	Kita26 Nishi3 2-20	756-6742	57D	1 / T	8:00-16:00	
Shinyo	Kita26 Nishi15 4-27	788-6400	57D	1 / T	8:30-16:30	
Kizuna Kita	Kita28 Nishi5 1-26	709-1015	5M	1 / T	8:30-16:30	
Shinkawa Himawari	Kita28 Nishi14 1-10	738-2222	57D	1 / T	8:30-16:30	
Sapporo Kita haguha	Kita29 Nishi10 2-5	768-8003	5M	1 / T	8:30-16:30	Holiday
Ai Hoikuen Hokuyo	Kita30 Nishi4 2-21	769-9917	57D	2 / T	8:30-16:30	
Sapporo Kita	Kita32 Nishi9 2-12	758-5455	5M	1	9:00-17:00	
Asabu	Kita39 Nishi3 2-3	716-9252	5M	1	9:00-17:00	
Akatsuki Shinoro	Shinoro1-6 2-7	772-3003	57D	1 / T	8:00-16:00	
Shinoro Chuo	Shinoro2-9 1-1	771-2117	57D	1	9:00-17:00	
Shinoro Koyo	Shinoro3-6 4-40	772-0050	57D	1 / T	8:30-16:30	
Tsubasa	Shinoro9-1 6-7	771-5511	57D	1 / T	9:00-17:00	
★Sapporo-shi Shinkawa	Shinkawa1-5 1-23	761-7962	57D	1	8:00-16:00	
Shinkawa Kita	Shinkawa4-11 5-23	763-3585	5M	1 / T	8:30-16:30	
Cosmos	Shinkawa 4-17-1-25	214-1313	5M	1 / T	8:30-16:30	
S.T.Nursery School Shinkawa-Nishi	Shinkawa Nishi 2-7 5-7	299-8170	5M	1 / T	8:00-16:00	
Shinkawa Nishi Koguma	Shinkawa Nishi3-5 5-10	764-2000	5M	1 / T	8:30-16:30	
Shin-Kotoni Minami	Shin-Kotoni2-jo 6-chome 2-34	768-5050	5M	1 / T	8:30-16:30	
Shin-Kotoni Chuo	Shin-Kotoni5-3 1-63	788-8688	57D	1 / T	8:00-16:00	
Sanwa Shin-Kotoni	Shin-KotoniKi	761-5252	57D	1	8:00-16:00	
Ask Shin-Kotoni	Shin-Kotoni7-2 2-35	769-8680	5M	1 / T	9:00-17:00	



**【Kita Ward】**

Name of facilities	Address	Tel	Age groups	Ext./Temp	Hours	Remarks
Art Childcare Shin-Kotoni	Shin-Kotoni8-1 4-33	708-0789	5M	1 / T	8:30-16:30	
★Sapporo-shi Shin-Kotoni	Shin-Kotoni8-3 1-40	761-4853	1Y10M	1	8:00-16:00	
Kizuna Asabu	Shin-Kotoni10-jo 1-chome 7-16	709-7311	5M	1 / T	8:30-16:30	
Sapporo Kobato	Shin-Kotoni11-15 1-38	762-9561	5M	1	8:00-16:00	
Skuld Angel Shin-kotoni-en	Shin-Kotoni12-12-5-2	839-1887	5M	2 / T	8:30-16:30	
Taihei	Taihei11-1 1-20	772-1450	57D	1 / T	8:00-16:00	
Shinkawa Nishi Koguma	Shinkawa Nishi3-5 5-10	764-2000	5M	1 / T	8:30-16:30	
Tonden	Tonden5-6 2-16	772-1151	5M	1	8:30-16:30	
Tonden Suzuran	Tonden6-4 2-20	775-8080	57D	1 / T	8:00-16:00	
Almighty Tonden-en	Tonden6-10 7-25	788-6635	57D	1 / T	9:00-17:00	
Tonden Ofuji	Tonden8-7 1-1	775-2511	5M	1 / T	8:00-16:00	
Dream Kids	Higashibarato1-1 8-31	788-3065	57D	1 / T	8:30-16:30	
Ainosato Kyodo	Minamiainosato5 6-1	770-5300	57D	1 / T	8:00-16:00	
Art Childcare Sapporo Yurigahara	Yurigahara1 1-1	748-1230	57D	1 / T	8:30-16:30	
Kazenoko	Yurigahara4 8-31	774-0484	57D	1	8:00-16:00	

**【Higashi Ward】**

Name of facilities	Address	Tel	Age groups	Ext./Temp	Hours	Remarks
Okadama Hibari	Okadama-cho 593-49	781-6680	5M	1 / T	8:30-16:30	
Naebo	Kita7 Higashi18 1-8	711-4973	57D	1 / T	9:00-17:00	
Chairekku Kita 8-jo Higashi	Kita8 Higashi19 2-7	769-9933	57D	2 / T	8:30-16:30	
★Higashi Ward Day Care& Child-rearing Support Center	Kita9 Higashi7 1-25	711-7801	57D	1 / T	8:00-16:00	
Motomachi Suginoko	Kita14 Higashi16 1-31	781-4477	57D	1	8:30-16:30	
Kosei Hato Poppo	Kita15 Higashi7 1-10	742-4876	57D	1 / T	9:00-17:00	
Sapporo Flower	Kita18 Higashi6 1-30	741-5492	57D	2 / T	9:00-17:00	
Sapporo Fukuchan II	Kita18 Higashi16 2-13	781-5578	57D	1	8:30-16:30	
★Sapporo-shi Mikaho	Kita19 Higashi5 1-24	711-8913	1Y10M	1	8:00-16:00	
Kokorono Satooya	Kita19 Higashi6 1-5	711-1667	57D	1 / T	8:30-16:30	
Meien	Kita23 Higashi14 1-5	751-9354	5M	1 / T	9:00-17:00	
Motomachi Nikoniko	Kita23 Higashi16 1-11	782-2551	5M	1 / T	9:00-17:00	Holiday
Art Childcare Sapporo Motomachi	Kita26 Higashi12 1-10	722-0123	57D	2 / T	8:30-16:30	
Harappa	Kita27 Higashi6 1-18	751-8593	57D	1 / T	8:00-16:00	
Motomachi	Kita27 Higashi19 6-10	781-6332	57D	1	8:30-16:30	

**【Higashi Ward】**

Name of facilities	Address	Tel	Age groups	Ext./ Temp	Childcare hours	Remarks
Motomachi Midori	Kita27 Higashi22 5-11	783-0011	57D	1 / T	9:00-17:00	
Hokuei Midori	Kita32 Higashi13 1-26	752-2221	57D	1 / T	9:00-17:00	
Sakae Minami	Kita34 Higashi23 4-19	792-6696	57D	1 / T	8:30-16:30	
Hokuei	Kita35 Higashi5 2-1	731-5304	57D	1	9:00-17:00	
Asabu Mutsumi	Kita38 Higashi1 4-5	788-3303	57D	1 / T	8:30-16:30	
Hinomaru	Kita40 Higashi9 3-15	751-0409	5M	1	9:00-17:00	
Ohisama Sapporo Higashi	Kita 41 Higashi 6 2-11	768-7831	57D	1 / T	8:30-16:30	
Sapporo Asabu Kirara	Kita 43 Higashi 1 3-1	733-0123	57D	1 / T	8:30-16:30	
Sakaemachi Aozora	Kita43 Higashi16 2-8	789-6230	57D	1 / T	8:30-16:30	
Sakae	Kita47 Higashi7 2-13	751-7333	57D	1 / T	8:00-16:00	
Aiwa Niiho	Kita9 Higashi11 3-7	722-8996	57D	1 / T	8:30-16:30	
Satsunae Kita	Higashi-Kariki10-4 1-20	791-8822	57D	1 / T	9:00-17:00	
Moere	Higashi-Kariki 11-3 2-18	790-3715	5M	1 / T	8:00-16:00	
Kariki	Higashi-Kariki 13-2 9-12	791-1115	57D	1 / T	8:00-16:00	
Sappro Kosei Fukushima II	Higashi-Naebo 5-3 3-45	781-6428	57D	1 / T	8:30-16:30	
Satsunae	Higashi-Naebo7-3 1-5	783-7711	57D	1 / T	9:00-17:00	
Moere Hato Poppo	Higashi-Naebo12-1 1-50	790-2531	57D	1 / T	9:00-17:00	
Makoto Satsunae	Higashi-Naebo 15-1 2-32	299-9367	5M	1 / T	8:30-16:30	
Kaisei Midori	Fushiko7-2 3-3	780-2251	57D	1 / T	9:00-17:00	
Kinikyo Poplar	Fushiko9-2 9-4	782-9429	57D	1 / T	8:30-16:30	
Makoto Sapporo	Honcho 2-2 7-11	788-3616	5M	1 / T	8:30-16:30	

**【Shiroishi Ward】**

Name of facilities	Address	Tel	Age groups	Ext./ Temp	Hours	Remarks
Kobushi	Kawakita2-1 8-16	875-7167	57D	1	8:30-16:30	
Kikusui Suzuran	Kikusui 1-3 3-46	811-5714	57D	2	8:00-16:00	
★Sapporo-shi Kikusui Nyuji	Kikusui5-1 8-14	821-0013	57D	1	8:00-16:00	
★Sapporo-shi Aoba	Kikusui5-2 1-4	811-2933	1Y10M	1	8:00-16:00	
Makoto	Kikusui8-3 3-18	841-0942	5M	1 / T	8:00-16:00	
Kyuseigun Kikusui Kamimachi	Kikusui-Kamimachi 3-2 52	821-2879	57D	1	8:00-16:00	
Kikusui Motomachi	Kikusui-Motomachi5-2 6-18	873-9888	57D	T	8:00-16:00	
Kikusui Motomachi II	Kikusui-Motomachi9-2 8-8	598-7771	57D	1 / T	8:00-16:00	

**【Shiroishi Ward】**

Name of facilities	Address	Tel	Age groups	Ext./ Temp	Hours	Remarks
Kita-Shiroishi	Kitago2-3 6-1	874-8222	57D	1 / T	8:00-16:00	
Kitago Kobushi	Kitago2-10 5-5	876-0474	57D	1 / T	8:30-16:30	
Nango	Sakae-dori6 19-7	851-5878	57D	1	8:30-16:30	
Oyachi Takada	Sakae-dori19 4-30	853-1801	57D	1 / T	8:30-16:30	
Shiroishi Chuo	Chuo3-5 2-37	861-5178	57D	1 / T	8:00-16:00	
★Shiroishi Ward Day Care& Child- rearing Support Center	Nango-dori1 Minami8- 1	861-1910	57D	1 / T	8:00-16:00	
★Sapporo-shi Higashi-Shiroishi	Nango-dori8 Kita4-1	861-7062	57D	1	8:00-16:00	
Poppins Nursery School Sapporo Shiroishi	Nango-dori14 Minami3-11	374-4143	57D	1 / T	8:00-16:00	
Hakuyo	Nango-dori15 Kita3-12	864-1260	57D	1 / T	8:30-16:30	
Nangodori Takada	Nango-doori 18 Kita 1- 20	376-5911	5M	1 / T	8:30-16:30	
Ofuji Kodomo-en	Nango-dori18 Kita6-4	864-3737	5M	1 / T	8:00-16:00	
Pikkoro Kodomo Club Higashi- Sapporo en	Higashi-Sapporo1-2 3- 10	812-7000	57D	2 / T	8:30-16:30	
Nikomaru-en Shiroishi	Higashi-Sapporo2-5 6- 9	850-9686	57D	1 / T	8:30-16:30	
Kitanohoshi Higashi-Sapporo	Higashi-Sapporo2-6 10-22	823-9204	57D	1	8:00-16:00	
★Sapporo-shi Higashi-Sapporo Nichii Kids Shiroishi	Higashi-Sapporo3-3 5- 15 Higashi-Sapporo3-5 3- 24	811-1552 820-7551	1Y10M 57D	1 1 / T	8:00-16:00 8:30-16:30	
Higashi-Sapporo castanet	Higashi-Sapporo 4-4 6- 16	837-1525	57D	1 / T	8:30-16:30	
Sappro Airinkan II	Heiwa-dori 8 Kita3-47	864-0762	5M	1 / T	8:00-16:00	
Shiroishi Usako	Heiwadori17 Kita1-10	863-0462	57D	1 / T	8:00-16:00	
Kitanohoshi Shiroishi	Hondori1Minami2-34	862-6383	57D	1 / T	8:00-16:00	
Taiyo no ko Sapporo Shiroishi	Hondori4 Kita6-1	374-5847	57D	2 / T	9:00-17:00	
Ask Shiroishi	Hondori8 Kita1-29	868-1150	5M	1 / T	9:00-17:00	
Higashi-Shiroishi Yukinko	Hondori14 Minami1-5	864-8871	57D	1	9:00-17:00	
Yonesato	Yonesato4-1 5-9	871-8337	5M	1	9:00-17:00	

### 【Atsubetsu Ward】

Name of facilities	Address	Tel	Age groups	Ext./ Temp	Hours	Remarks
Aoba Kosho	Aoba-cho2 7-25	891-5202	57D	1 / T	8:00-16:00	Holiday
★Atsubetsu Ward Day Care & Child-rearing Support Center	AtsubetsuChuo 1-6-1-10	887-8165	57D	1 / T	8:00-16:00	
Hibarigaoka	Atsubetsu Chuo2-4 11-1	891-1811	57D	1 / T	8:00-16:00	
Atsubetsu Komakusa	Atsubetsu Chuo3-4 4-8	891-5541	57D	1 / T	8:00-16:00	
Sapporo Wampaku Kan	Atsubetsu Chuo5-6 6-11	896-1893	57D	1 / T	8:00-16:00	
Magokoro	Atsubetsu-cho Kaminoppo 822	891-7511	57D	1 / T	8:00-16:00	
Kidspark Atsubetsu	Atsubetsu Nishi 4-2 6-55	807-0708	5M	1 / T	8:00-16:00	
Atsubetsu Nishi	Atsubetsu Nishi4-4 10-10	802-3115	5M	1	8:00-16:00	
Shin-Sapporo Tomato	Atsubetsu Higashi2-3 1-10	897-8693	57D	1	8:30-16:30	
Atsubetsu Moegi	Atsubetsu Higashi5-7 10-1	876-8788	5M	1 / T	8:00-16:00	
Hibarigaoka Asunaro	Atsubetsu Minami1 4-13	375-9835	5M	1 / T	8:30-16:30	
Atsubetsu Kyoei	Atsubetsu Minami1 11-1	891-9470	5M	1 / T	8:00-16:00	
Momijidai Kita	Momijidai Kita4 3-1	897-0461	57D	1 / T	8:00-16:00	
Sapporo Kyodo	Momijidai Nishi6 1-3	897-5033	57D	1 / T	8:00-16:00	
Momijidai Minami	Momijidai Minami6 11-1	897-7311	57D	1	8:00-16:00	

### 【Toyohira Ward】

Name of facilities	Address	Tel	Age groups	Ext./ Temp	Short	Remarks
Tsukisamu Nishi Wapaku	Tsukisamu Nishi1-11-3-51	858-1890	5M	1 / T	8:00-16:00	
Nishioka	Tsukisamu Nishi2-10 2-78	851-6358	5M	1	8:00-16:00	
Skuld Angel Tsukisamu en	Tsukisamu Nishi 5 10-2-8	376-5790	57D	1 / T	8:30-16:30	
★Toyohira Ward Day Care & Child-rearing Support Center	Tsukisamu Higashi1-4 2-11	851-3945	57D	1 / T	8:00-16:00	Holiday
Pikkoro Kodomo Club Fukuzumien	Tsukisamu Higashi1-15 11-7	376-5222	57D	2 / T	8:30-16:30	
Higashi Tsukisamu	Tsukisamu Higashi1-19 1-16	851-7249	1Y10M	1 / T	8:00-16:00	
Minori	Tsukisamu Higashi 2-11 14-21	851-0982	57D	1 / T	8:00-16:00	
Tsukisamu Junnome	Tsukisamu Higashi3-11 1-23	858-3330	5M	1 / T	8:30-16:30	
Pikkoro Kodomo Club Tsukisamuen	Tsukisamu Higashi5-10 3-3	856-8110	57D	2 / T	8:30-16:30	
Sapporo Fukuchan I	Toyohira1-13 1-20	811-7403	57D	1	8:30-16:30	
Toyohira	Toyohira3-11 2-3	826-6618	5M	1 / T	8:00-16:00	
Sapporo Airinkan	Toyohira4-3 3-27	821-5905	5M	1 / T	8:00-16:00	

**【Toyohira Ward】**

Name of facilities	Address	Tel	Age groups	Ext./ Temp	Hours	Remarks
Nakanoshima Koshō	Nakanoshima2-1 3-18	831-1600	57D	1 / T	9:00-17:00	
Nakanoshima	Nakanoshima2-9 5-1	841-1646	57D	1 / T	8:00-16:00	
Nishioka Takadai	Nishioka4-12 4-1	583-1001	5M	1 / T	8:00-16:00	
★Sapporo-shi Toyozono	Misono5-1 2-5	812-4668	1Y10M	1	8:00-16:00	
★Sapporo-shi Misono	Misono 5-7 7-1	831-6890	57D	1	8:00-16:00	
Hiragishi Koshō	Hiragishi1-11 1-7	824-2100	57D	1 / T	8:00-16:00	
Yoshida Gakuen Yashinoki	Hiragishi1-15 4-11	813-8400	57D	1 / T	8:30-16:30	
Sapporo Airinkan Ringo	Hiragishi4-1 1-22	811-7372	5M	1	8:00-16:00	
Kodomono Ie	Hiragishi4-9 4-9	841-0232	57D	1	8:00-16:00	
Sapporo Airinkan Higashiyama	Hiragishi4-11 3-14	822-4208	5M	1 / T	8:00-16:00	
Nyuyouji Hoiku Club Zosan	Hiragishi6-13 3-30	833-1225	5M	2	9:00-17:00	
Campus Hiragishi	Hiragishi6-14 4-37	376-1263	57D	2 / T	8:30-16:30	
Hitsujigaoka Fuji	Fukuzumi1-3 9-30	851-1238	5M	1 / T	8:00-16:00	
Fukuzumi	Fukuzumi2-9 3-8	852-6611	5M	1 / T	8:30-16:30	

**【Kiyota Ward】**

Name of facilities	Address	Tel	Age groups	Ext./ Temp	Hours	Remarks
Kiyota	Hiraoka1-2 11-30	881-0329	57D	1	8:30-16:30	
Love clover no Hoikuen Sapporo Kitano	Kitano1-1 3-1	888-3301	57D	1 / T	8:30-16:30	
Sapporo Kitano	Kitano7-4 11-30	882-2850	57D	2 / T	8:30-16:30	
Chuwa Kiyota	Kiyota1-4 3-80	375-1510	5M	2 / T	8:30-16:30	
Sapporo Minami Kiyota	Kiyota5-2 29-1	882-0505	57D	1 / T	8:30-16:30	
Lindo	Kiyota7-4 14-10	887-8407	57D	1 / T	8:30-16:30	
Sawayaka	Hiraoka6-2 3-5	883-3422	5M		8:00-16:00	
Sapporo Asahi	Utsukushigaoka3-2 6-27	881-0606	57D	1 / T	8:30-16:30	
Sapporo Shinei Higashi	Shinei5-5 7-43	884-0909	57D	1	8:30-16:30	
Sapporo Suginoko	Kitano4-3 1-8	887-3111	5M	1 / T	8:30-16:30	
Love clover no Hoikuen Sapporo Kiyota	Kiyota 7-2 1-10	887-5566	5M	1 / T	8:30-16:30	

**【Minami Ward】**

Name of facilities	Address	Tel	Age groups	Ext./ Temp	Hours	Remarks
Daichino-mori	Kawazoe1-1 3-82	572-0251	57D	1	8:30-16:30	
Lumbini	Kawazoe9-2 1-18	572-8877	5M	1 / T	8:30-16:30	
Jozankei	Jozankei Onsen Higashi3 256	598-3448	5M	1 / T	8:00-16:00	
Chibikko no Mori	Sumikawa4-2 10-1	374-5015	5M	1 / T	8:30-16:30	
Sumikawa	Sumikawa5-5 5-10	821-0471	5M	1 / T	8:00-16:00	
Kodomo Mirai Hoikuen Tokiwaen	Tokiwa 2-2-8-12	211-6941	5M	1	8:30-16:30	
Fujigaoka	Fujino4-5 20-10	593-3567	5M		8:30-16:30	
Yu・Wing	Makomanai Akebono- cho3 4-1	585-2830	5M	T	8:30-16:30	
Makomanai Midorimachi	Makomanai Midorimachi3 3-1	582-1521	57D	1 / T	8:00-16:00	
Makomanai	Makomanai Minamimachi1 7-4	581-0005	57D	2 / T	8:00-16:00	
Moiwa Kouka	Minami30 Nishi8 8-5	582-1581	57D	1 / T	8:00-16:00	
Kumanoko	Minamisawa2-3 7-1	578-5133	57D	1	8:30-16:30	
Mokuiku Kodomo no ie Minaminosawa	Minamisawa5-3 1-20	596-7665	5M	1 / T	8:00-16:00	

**【Nishi Ward】**

Name of facilities	Address	Tel	Age groups	Ext./ Temp	Hours	Remarks
Kotoni Ayame	Kotoni2-2 6-25	631-8560	57D	1	8:30-16:30	
Kotoni Nijinoiro	Kotoni3-4 3-18	633-2600	5M	1	8:30-16:30	
Art Childcare Kotoni	Kotoni4-1 1-40	613-0123	5M	1 / T	8:30-16:30	
Nishino Fureai	Nishino1-2 6-16	666-7117	5M	1 / T	9:00-17:00	
Nishino Chuo	Nishino4-3 8-12	661-5397	57D	1	8:30-16:30	
Nishino Aoi	Nishino7-8 14-5	667-5454	57D	1	8:00-16:00	
Pikkoro Kodomo club Hassamu- Minami eikimae	Nishimachi kita6 4- 14	676-7228	5M	1 / T	8:30-16:30	
Teine Higashi	Nishimachi Minami13 3-1	662-4204	5M	1 / T	8:00-16:00	
Sapporo-shi Nijuyonken Minami	Nijuyonken1-4 2-6	631-8616	57D	1 / T	8:30-16:30	
Sapporo-shi Nijuyonken Minami Yakan-bu	Nijuyonken1-4 2-6	631-8616	57D	3.4.	13:00-21:00	
Art Childcare Sapporo Nijuyonken	Nijuyonken1-4 2-35	614-0123	57D	1 / T	8:30-16:30	
★Nishi Ward Day Care & Child- rearing Support Center	Nijuyonken3-5 6-1	621-1496	57D	1 / T	8:00-16:00	Holiday
Nijuyonken	Nijuyonken3-7 5-28	643-9030	57D	1 / T	8:30-16:30	
Kotoni	Nijuyonken4-3 4-5	640-3715	5M	1 / T	8:30-16:30	

**【Nishi Ward】**

Name of facilities	Address	Tel	Age groups	Ext./ Temp	Hours	Remarks
Koguma	Nijuyonken4-6 3-25	621-0517	57D	1	8:30-16:30	
Hachiken Taiyonoko	Hachiken3 Higashi4 4-16	621-9024	57D	1	8:00-16:00	
Hachiken Hoshinoko	Hachiken4 Nishi5 1-1	641-0232	5M	1 / T	9:00-17:00	
Art Childcare Sapporo Hachiken	Hachiken6 Higashi 3 8-6	707-0126	57D	1 / T	8:30-16:30	
Yoshidagakuen Sakura	Hachiken7 Nishi 2 2-15	622-3331	57D	1 / T	8:30-16:30	
Hassamu	Hassamu3-1 8-1	661-3997	5M	2 / T	8:30-16:30	
Hassamu Hikari	Hassamu5-6 3-1	661-1445	57D	1 / T	8:30-16:30	
Hassamu Morinowa	Hassamu5-8 13-6	668-8808	5M	1	8:00-16:00	
Hassamu Wampaku	Hassamu6-14 18- 23	590-1890	5M	1 / T	8:00-16:00	
Hassamu Sorairo	Hassamu8-11 2-8	676-7650	5M	1 / T	8:00-16:00	
Nishi Hassamu	Hassamu9-11 1-20	661-8464	5M	1 / T	8:00-16:00	
Chuwa Hassamu	Hassamu9-14 516- 155	663-1077	57D	2 / T	8:30-16:30	
Hassamu Tanpopo	Hassamu11-5 11-1	661-1594	57D	1	8:00-16:00	
Hassamu Ozora	Hassamu14-2 10- 57	676-5177	57D	1 / T	8:00-16:00	
Heiwa Asumi	Heiwa 2-4 11-26	676-9727	5M	1 / T	8:00-16:00	
Heiwa Nijinoiro	Heiwa 3-6 12-21	668-7100	5M	1 / T	8:30-16:30	
Miyanosawa Suzuran	Miyanosawa1-2 6- 16	662-8181	57D	1 / T	8:30-16:30	
Sapporo Miyanosawa Kirara	Miyanosawa1-4 7- 20	668-6350	57D	2 / T	8:30-16:30	
Takasago Nursery School Sapporo	Miyanosawa2-5 3-7	688-5218	57D	1 / T	8:00-16:00	
Miyanosawa Momonohana	Miyanosawa3-3 9-3	662-0087	57D	1 / T	8:00-16:00	
Yamanote Asumi	Yamanote 2-4-5-19	688-7933	57D	1 / T	8:00-16:00	
Yamanote Nijinoiro	Yamanote 2-7-3-26	633-5700	5M	1 / T	8:00-16:00	
★Sapporo-shi Yamanote	Yamanote4-8 1-6	611-4477	57D	1	8:00-16:00	

**【Teine Ward 】**

Name of facilities	Address	Tel	Age groups	Ext.	Hours	Remarks
Asukaze	Asukaze3 11-11	676-4340	57D	1 / T	8:30-16:30	
Teine Akebono	Akebono2-1 2-31	683-0363	57D	1 / T	8:30-16:30	
Akatsuki Yamaguchi	Akebono11-1 3-30	682-2472	57D	1 / T	8:00-16:00	
Teine Yamanami	Inaho2-5 5-5	695-8073	5M	1 / T	8:00-16:00	
Inaho Chuo	Inaho4-7 1-15	522-8300	5M	1	8:30-16:30	
Shinhassamu lilac	Shinhassamu1-1 1122-27	215-5269	57D	1 / T	8:30-16:30	
Shin-Hassamu Tanpopo	Shin-Hassamu6-4 15-10	686-0560	57D	1	8:00-16:00	
Teine Momonohana	Teinehoncho2-4 1-23	213-8741	57D	1 / T	8:00-16:00	
★Teine Ward Day Care & Child-rearing Support Center	Teine Honcho3-2 4-15	681-3160	57D	1 / T	8:00-16:00	
Sapporo Hokuyo	Teine Yamaguchi511-1	215-8711	57D	1 / T	9:00-17:00	
Sayori II	Tomioka1-5 9-1	691-8801	57D	1	8:00-16:00	
Tomioka Baobabu	Timioka 2-2 10-15	686-8082	5M	1 / T	8:00-16:00	
Tsukushi	Tomioka2-4 7-6	695-8661	57D	1 / T	8:30-16:30	
Miyanosawa Sakura	Nishi Miyanosawa4-1 1-20	663-8118	5M	1 / T	8:30-16:30	
Maeda Chuo	Maeda8-12 5-1	681-0010	57D	1	8:00-16:00	



## Community-based Childcare Programs (Chiiki-gata Hoiku Jigyo)

These services provide day care to children mainly from 5 months to under 3 years old (until the end of the fiscal year in which the child turns 3) in smaller numbers than day care centers, which accommodate 19 children or less in principle.

◆ Inquiries: Facilities Management Section, Bureau for the Future of Children ☎ 011-211-2986

### ☆ Home Childcare Programs "Hoiku Mama" Service

Children under 3 years old who cannot be taken care of at home due to parents' circumstances (ex. work, disease, etc.) can be looked after by city-certified Childcare Moms (Hoiku Mama).

- ☐ **Days:** From Monday to Friday except for the year-end and New Year's holidays (Dec. 29 to Jan. 3) and national holidays. \*Also on Saturdays at some facilities
- ☐ **Application:** Regional Ward Office (Children and Family Welfare Section) p.70-71
- ☐ **Fee:** The fee varies depending on the child's age, the residential tax amount of each household and other factors.

#### ★ Home Childcare Program Sites as of April 1, 2021

Name	Address	Tel	Open	Extended	Hours	Saturday	Meals provided
Donguri	Kita 40-jo Nishi 5-chome 1-38, Kita-ku	716-2326	9:00~17:00	-	9:00~17:00	-	-
Tampopo	Kita 35-jo Higashi 28-chome 4-3, Higashi-ku	784-5520	9:00~17:00	-	9:00~17:00	-	○
Guri-gura	Kita 50-jo Higashi 9-chome 5-15, Higashi-ku	748-5556	9:00~17:00	EX③	9:00~17:00	-	○
Poppo-chan	Kiyota 1-jo 2-chome 5-50, Kiyota-ku	882-8367	9:00~17:00	EX③	9:00~17:00	-	○
Ohisama	Kiyota 7-jo 1-chome 10-27, Kiyota-ku	885-8588	9:00~17:00	EX①③	9:00~17:00	-	○
Tsubomi	Minami 34-jo Nishi 9-chome 3-7, Minami-ku	588-5615	9:00~17:00	EX①③	9:00~17:00	-	○
Teku-teku	Nishimachi-kita 19 chome 2-17, Nishi-ku	688-7007	9:00~17:00	EX①③	9:00~17:00	-	○
Hinatabokko	Hachiken 4-jo Nishi 4-chome 3-24, Nishi-ku	614-8761	9:00~17:00	EX①③	9:00~17:00	-	○
Berry-berry	Maeda 7-jo 7-chome 4-9, Teine-ku	694-2770	9:00~17:00	EX①③	9:00~17:00	-	○

#### ★Extended-time childcare★

EX①: extended childcare for one hour later than the regular time

EX③: extended childcare for one hour earlier than the regular time

## ☆ Small-scale Childcare Programs ( " Shoukibo Hoiku jigyo " )

Children under 3 years old who cannot be looked after at home for reasons such as employment can be taken care of in rented rooms located in areas convenient for commuting. (Facilities offering this service are listed below)

- ☐ **Days:** From Monday to Saturday except for the year-end and New Year's holidays (Dec. 29 to Jan. 3) and national holidays. \* Some facilities close on Saturdays.
- ☐ **Application:** Regional Ward Office (Children and Family Welfare Section) p.70-71
- ☐ **Fee:** The fee varies depending on the child's age, the residential tax amount of each household and other factors.

### ★ List of Facilities Offering Sapporo Small-scale Childcare Services in Sapporo as of April 1, 2021

#### • Extended-time childcare (Ext.)

EX①: extended childcare for one hour later than the regular time

EX②: extended childcare for two hours later than the regular time

EX③: extended childcare for one hour earlier than the regular time

#### • Short-time childcare (Short)

⑧: from 8:00 to 16:00

⑧15: from 8:15 to 16:15

⑧+: from 8:30 to 16:30

⑨: from 9:00 to 17:00

• **57D:** childcare after maternity leave (57 days old and older)  
(only Minai Ward Day Care & Child-rearing Support Center)

#### • Saturday childcare (Saturday)

○ : Provided

△ : Provided but other facility

#### < Type A >

#### 【 Chuo Ward 】

Name	Address	Tel	Open	Ext.	Short	Saturday
Himawari Ⅱ	Odori Nishi 13-chome 4-161	208-2288	7:00~18:00	EX①	⑧+	○
Himawari	Odori Nishi 13-chome 4-161	596-6415	7:00~18:00	EX①	⑧+	△
Takara no Mori Sapporo Idai Mae	Odori Nishi 17-chome 2-35	616-1331	7:00~18:00	EX①	⑧	○
Sapporo Montessori Kodomono Ie	Odori Nishi 20-chome 1-3	558-7068	7:00~18:00	EX①	⑧+	○
Kodomo Plaza Aoitori Maruyama	Kita 2-jo Nishi 24-chome 2-30	213-7630	7:00~18:00	EX①	⑧+	△
Catholic Seien Tenshi no Ouchi	Kita 2-jo Higashi 7-chome 82	213-0403	7:00~18:00	EX②	⑧	△
Takara no Mori Maruyama	Kita 5-jo Nishi 27-chome 3-5	688-5635	7:00~18:00	EX①	⑧	○
Sklud Angel Kita-Maruyama	Kita 6-jo Nishi 26-chome 2-1	215-4415	7:00~18:00	EX①	⑨	○
Crayon	Minami 1-jo Nishi 9-chome 9	522-5756	7:00~18:00	—	⑨	—
Almighty Maruyama	Minami 1-jo Nishi 24-chome 1-6	688-6705	7:00~18:00	EX①	⑧+	○

【 Chuo Ward 】

Name	Address	Tel	Open	Ext.	Short	Saturday
Pikkoro Kids Maruyama Urasando	Minami 1-jo Nishi 24-chome 1-6	688-5365	7:00~18:00	EX①	⑧+	○
Almighty Chuo	Minami 2-jo Nishi 10-chome 1000-30	200-0072	7:00~18:00	EX①	⑧+	○
Star Minami 2-jo	Minami 2-jo Nishi 13-chome 318-1	205-0304	7:00~18:00	EX①	⑧	○
Pikkoro Kids Maruyama-koen	Minami 2-jo Nishi 25-chome 1-27	615-0012	7:00~18:00	EX①	⑧+	○
Minami 3-jo Suzuran	Minami 3-jo Nishi 13-chome 320-18	215-0336	7:00~18:00	EX①	⑧+	○
Star Hoikuen Nishi-Tondendori	Minami 6-jo Nishi 12-chome 1302-26	596-0404	7:00~18:00	EX①	⑧	○
Salare	Minami 6-jo Nishi 23-chome 2-2	206-4354	7:00~18:00	EX①	⑨	○
Pikkoro Kids Nakajima-koen	Minami 11-jo Nishi 8-chome 4-8	215-1165	7:00~18:00	EX①	⑧+	○
Fushimi Sumire	Minami 14-jo Nishi 16-chome 3-1	511-5553	7:00~18:00	EX①	⑨	○
Mori No Nakama Sapporo Yamahana	Minami 15-jo Nishi 11-chome 2-38	205-0602	7:00~18:00 / 57D	EX②	⑧+	○
Kokoron	Minami 15-jo Nishi 13-chome 2-29	552-3711	7:00~18:00	EX①	⑧	—
Kids-land Sapporo Kousai	Minami 15-jo Nishi 18-chome 3-2	596-7616	7:00~18:00	EX①	⑧	○
Yume Fusen	Minami 15-jo Nishi 19-chome 4-1	211-0880	7:00~18:00	EX②	⑧+	○
Yamahana Niji no Iro	Minami 16-jo Nishi 7-chome 2-8	596-0416	7:00~18:00	EX①	⑧+	○
S.T.Nursery SCHOOL Yamahana-minami	Minami 23-jo Nishi 15-chome 1-1	211-4564	7:00~18:00	EX①	⑧	○
Pastel	Miyanomori 3-jo 8-chome 4-3	213-7229	7:00~18:00	—	⑨	—

【 Kita Ward 】

Name	Address	Tel	Open	Ext.	Short	Saturday
Taiyo Kokoro Nursery Ainosato	Ainosato 2-jo 4-chome 16-1	299-7123	7:00~18:00 / 57D	EX①	⑧+	○
Art Child Care Sapporo Ainosato	Ainosato 4-jo 5-chome 15-19	792-8806	7:00~18:00	EX①	⑧	○
Bambi	Kita 22-jo Nishi 4-chome 1-1	214-0205	7:00~18:00	EX①	⑧	○
Petit Tomato	Kita 23-jo Nishi 5-chome 2-39	757-1106	7:00~18:00	EX①	⑨	—
Kita 24-jo Hagu Hagu	Kita 25-jo Nishi 4-chome 2-2	788-3425	7:00~18:00	EX①	⑧+	○
Angelo	Kita 35-jo Nishi 2-chome 1-40	757-3100	7:00~18:00	EX①	⑧	△
Asabu Angelo	Kita 37-jo Nishi 4-chome 1-25	776-6002	7:00~18:00	EX①	⑧	○

【 Kita Ward 】

Name	Address	Tel	Open	Ext.	Short	Saturday
Mokuiku Kodomono Ie Shinkawa	Shinkawa 3-jo 7-chome 1-65	763-6335	7:00~18:00	EX②	⑧	○
Shin-kotoni Niji no Iro	Shin-Kotoni 5-jo 2-chome 1-8	765-1611	7:00~18:00	EX①	⑧+	○
Miyuki	Shin-Kotoni 8-jo 1-chome 2-5	737-8026	7:00~18:00	EX②	⑧	△
Kizuna Shin-kotoni	Shin-kotoni 11-jo 4-chome 3-16	769-5550	7:00~18:00	—	⑧+	△
Taihei Sakura no Hana	Taihei 10-jo 5-chome, 2-1	214-0807	7:00~18:00	EX①	⑧	○
Mokuiku Kodomono Ie Tonden	Tonden 6-jo 7-chome 1-13	775-1940	7:00~18:00	EX②	⑧	○
Almighty Tonden	Tonden 6-jo 10-chome 7-30	299-7870	7:00~18:00	EX①	⑧+	○
Orion	Minami-ainosato 5-chome 8-10	769-0286	7:00~18:00	EX①	⑧	○

【 Higashi Ward 】

Name	Address	Tel	Open	Ext.	Short	Saturday
Kita 7-jo Hana	Kita 7-jo Higashi 8-chome 1-6	788-2284	7:00~18:00	EX①	⑧+	○
Aye Aye	Kita 11-jo Higashi 3-chome 2-7	214-9789	7:00~18:00	EX①	⑨	—
Sukoyaka Hoikuen Hokkaido	Kita 11-jo Higashi 6-chome 1-35	214-1915	7:00~18:00	EX①	⑧+	○
Naebo Miraino Tane	Kita 12-jo Higashi 12-chome 2-33	792-5580	7:00~18:00	EX①	⑧+	○
Victory	Kita 14-jo Higashi 13-chome 1-25	743-6136	7:00~18:00	EX①	⑨	—
An-an Nursery Kanjodori-higashi Room	Kita 16-jo Higashi 15-chome 2-20	748-3715	7:00~18:00 / 57D	EX①	⑧+	○
Pikkoro Kids Motomachi	Kita 21-jo Higashi 20-chome 3-20	780-5567	7:00~18:00	EX①	⑧+	○
Cassiopeia	Kita 23-jo Higashi 2-chome 6-12	748-7666	7:00~18:00	EX①	⑧	○
Aura Motomachi	Kita 25-jo Higashi 12-chome 3-13	712-2000	7:00~18:00	EX①	⑧+	○
Aura	Kita 30-jo Higashi 7-chome 1-18	722-0505	7:00~18:00	EX①	⑧+	○
Sakaemachi Mitsubachi	Kita 39-jo Higashi 19-chome 2-15	792-6575	7:00~18:00	EX①	⑧	○
Kokuano Irodori	Higashi Naebo 12-jo 3-chome 1-18	374-6762	7:00~18:00	EX①	⑧+	○
Olive Berry	Higashi-Naebo 12-jo 3-chome 1-18	374-6762	7:00~18:00	EX①	⑧+	○

【 Shiroishi Ward 】

Name	Address	Tel	Open	Ext.	Short	Saturday
Morino Nakama Kikusui Motomachi	Kikusui Motomachi 6-jo 2-chome 7-1	807-4581	7:00~18:00 / 57D	EX②	⑧+	○
Chuwa Nangou	Sakae-dori 19-chome 4-13	826-6274	7:00~18:00	EX②	⑧+	○
Smile	Nango-dori 13-chome Minami 4-26	598-1336	7:00~18:00	EX①	⑨	—
Ohfuji Kodomoen Shirakaba kan	Nango-dori 18-chome Kita 3-14	860-4747	7:00~18:00	EX①	⑧	△
Pikkoro Kids Higashi-Sapporo	Higashi-Sapporo 2-jo 5-chome 6-1	831-8817	7:00~18:00	EX①	⑧+	○
Pikkoro Kids Shiroishi Ekimae	Higashi-Sapporo 4-jo 6-chome 1-15	862-2550	7:00~18:00	EX①	⑧+	○
Mokuiku Kodomono Ie Shiroishi	Heiwa-dori 3-chome Kita 3-3	598-9393	7:00~18:00	EX①	⑧	○
Ohfuji Kodomoen Hongo kan	Hongo-dori 7-chome Minami 1-3, Shiroishi-ku	861-1018	7:00~18:00	EX①	⑧	○
Dan Dan	Hongo-dori 8-chome Kita7-14	861-0320	7:00~18:00	EX①	⑨	○
Nikomaru en Nango	Hongo-dori 8-chome Minami1-2	867-9770	7:00~18:00 / *Holiday	EX①	⑧+	○/H
Nikomaru en Higashi-shiroishi	Hongo-dori 9-chome Minami 2-10	799-1565	7:00~18:00 / *Holiday	EX①	⑧+	△/H
Shiroishi Yotsuba	Hondori 1-chome Kita3-10	807-4007	7:00~18:00	EX①	⑨	○

\*Holiday: Holiday childcare

Childcare is available on Sundays and national holidays if parents have Type 2 or Type 3 Certification and their children aged between 5 months to 2 years old go to authorized day care centers or centers for early childhood education and care, or they use community-based childcare programs.

\*Please contact the individual facilities for details.

【 Atsubetsu Ward 】

Name	Address	Tel	Open	Ext.	Short	Saturday
Hibarigaoka Ensemble	Atsubetsu-chuo 3-jo 2-chome 16-37	887-9682	7:00~18:00	EX①	⑧	○
Sakura Kaminoppo	Kaminoppo 3-jo 4-chome 19-26	376-0373	7:00~18:00	EX①	⑧+	○
Sakura Atsubetsu-nishi	Atsubetsu-nishi 2-jo 4-chome 2-10	887-9801	7:00~18:00	EX②	⑧+	○
Atsubetu nishi Crayon	Atsubetsu nishi 3-jo 3-chome 4-14	802-7208	7:00~18:00	EX①	⑧+	○
Hagukumi en Atsubetsu	Atsubetsu minami 2-chome 12-14	896-8993	7:00~18:00	EX①	⑧+	○
Minna no nursery	Atsubetsu minami 5-chome 3-35	807-5306	7:00~18:00	EX①	⑧	○

【 Toyohira Ward 】 \*1Y: aged 1 year old (born between April 2, 2019 to April1, 2020) (only Sapporo Jikei)

Name	Address	Tel	Open	Ext.	Short	Saturday
Sapporo Jikei	Asahi-machi 7-chome 3-7	799-0202	7:00~18:00 *1Y	EX①	⑧	○
Toyohira room	Toyohira 3-jo 12-chome 1-1	827-9215	7:00~18:00	EX①	⑧	○
Sakurairo	Toyohira 8-jo 12-chome 1-3	376-5410	7:00~18:00	EX①	⑧	○
Chibikko Hoiku Room Sapporo Dome Mae	Tsukisamu-higashi 1-jo 15- chome 1-20	851-6000	7:00~18:00	EX①	⑨	○
Pegasus	Nakanoshima 2-jo 3-chome 1- 24	827-7787	7:00~18:00	EX①	⑧	○
Harunire	Nakanoshima 2-jo 7-chome 2- 2	376-5648	7:00~18:00	EX①	⑧+	○
Nishioka Kurinoki	Nishioka 1-jo 8-chome 1-8	598-6042	7:00~18:00	EX①	⑧+	○
Hiragishi Orange	Hiragishi 2-jo 6-chome 2-18	827-9200	7:00~18:00	EX①	⑧+	○
An-an Hiragishi Room	Hiragishi 2-jo 9-chome 2-1	807-4824	7:00~18:00	EX①	⑧+	○
Himawari sun	Hiragishi 2-jo 11-chome 1-29, Toyohira-ku	841-5437	7:00~18:00	EX①	⑧	○
Taiyo Kokoro Nursery Hiragishi	Hiragishi 3-jo 4-chome 1-29	799-4466	7:00~18:00 / 57D	EX①	⑧+	○
Chibikko Hoiku Room Hiragishi Himawari	Hiragishi 3-jo 5-chome 4-17	824-5288	7:00~18:00 / *Holiday	EX①	⑧+	○/H
Miharu no Ie	Hiragishi 6-jo 17-chome 1-25	818-0380	7:00~18:00	EX①	⑧+	○
An-an Fukuzumi Room	Fukuzumi 1-jo 6-chome 15-15	376-1825	7:00~18:00 / 57D	EX①	⑨	○
Toyozono Yotsuba	Misono 2-jo 6-chome 2-8	827-8824	7:00~18:00	EX①	⑨	○
Nursery Yume no Ki	Misono 3-jo 4-chome 1-16	876-9377	7:00~18:00	EX②	⑧+	○
Etoile	Misono 3-jo 7-chome 1-19	799-4433	7:00~18:00	EX①	⑨	○
Misono Yotsuba	Misono 7-jo 5-chome 3-9	850-9360	7:00~18:00	EX①	⑨	○
Leben Misono	Misono 8-jo 3-chome 3-2	818-3620	7:00~18:00	EX①	⑧	○

\*Holiday: Holiday childcare

Childcare is available on Sundays and national holidays if parents have Type 2 or Type 3 Certification and their children aged between 5 months to 2 years old go to authorized day care centers or centers for early childhood education and care, or they use community-based childcare programs.

\*Please contact the individual facilities for details.

【 Kiyota Ward 】

Name	Address	Tel	Open	Ext.	Short	Saturday
mirea	Kitano 5-jo 3-chome 9-15	398-7168	7:00~18:00	EX①	⑧+	○
Yotsuba	Kiyota 2-jo 1-chome 14-8	839-1115	7:00~18:00	EX①	⑨	○
Manmaru	Satozuka-Midorigaoka 6-chome 1-1	802-5815	7:00~18:00	EX①	⑧	○
Ichigo	Hiraoka 1-jo 2-chome 2-6	882-8433	7:00~18:00	EX①	⑨	○
Kurumi	Hiraoka 2-jo 1-chome 5-8	802-7737	7:00~18:00	EX①	⑨	○
Sakura	Hiraoka 2-jo 5-chome 2-50	378-9133	7:00~18:00	EX①	⑨	○

【 Minami Ward 】

Name	Address	Tel	Open	Ext.	Short	Saturday
Hironobu	Sumikawa 3-jo 1-chome 1-12	867-0088	7:00~18:00	EX①	⑧+	○
Sumikawa Manmaru	Sumikawa 3-jo 4-chome 4-17	818-0015	7:00~18:00	EX①	⑧	○
Little kid's Club Jieitai-mae	Sumikawa 4-jo 7-chome 3-27	374-4757	7:00~18:00	EX①	⑧+	○
Sumikawa Ichigo	Sumikawa 5-jo 3-chome 9-10	812-1555	7:00~18:00	EX①	⑧+	○
Fureai Sumikawa-minami	Sumikawa 6-jo 12-chome 15-6	211-4152	7:00~18:00	EX②	⑧	○
Mokuiku Kodomono Ie Fujino	Fujino 3-jo 2-chome 1-57	596-7676	7:00~18:00	EX①	⑧	○
S.T. Nursery SCHOOL Fujino	Fujino 3-jo 4-chome 2-17	212-1045	7:00~18:00	EX①	⑧	○
Fujino Banbini	Fujino 4-jo 11-chome 14-12	596-2208	7:00~18:00	EX①	⑧	○
Minami Ward Day Care & Child-rearing Support Center	Makomanai Saiwai-machi 2-chome 2-2	215-1736	7:00~18:00 / 57D	EX①	⑧	○
Chuwa Minami	Minami 37-jo nishi 11-chome 6-15	522-6568	7:00~18:00	EX①	⑧+	○

【 Nishi Ward 】

Name	Address	Tel	Open	Ext.	Short	Saturday
Nishino Niji no Iro	Nishino 8-jo 8-chome 2-40	688-6712	7:00~18:00	EX①	⑧+	△
Nishimachi Niji no Iro	Nishimachi Kita 15-chome 5-16	215-4516	7:00~18:00	EX①	⑧	△
Hagu Hagu	Nishimachi Minami 10-chome 5-11	688-6095	7:00~18:00	EX①	⑧+	○
Korokoro	Nijuyonken 4-jo 2-chome 1-10	215-6053	7:00~18:00	EX①	⑧+	○
Koguma House	Nijuyonken 4-jo 6-chome 3-18	640-1800	7:00~18:00	EX①	⑧+	△

【 Nishi Ward 】

Name	Address	Tel	Open	Ext.	Short	Saturday
Hachiken Ajisai	Hachiken 4-jo Higashi 1-chome 2-10	624-5220	7:00~18:00	EX①	⑧+	○
S.T Nursery SCHOOL Hachiken	Hachiken 5-jo Nishi 2-chome 3-23	688-7860	7:00~18:00	EX①	⑧	○
Hassamu Niji no Iro	Hassamu 2-jo 5-chome 5-6	669-3330	7:00~18:00	EX①	⑧	△
Mori no Tartan Maar	Hassamu 3-jo 6-chome 8-6	664-6766	7:00~18:00	EX①	⑧	○
Mori no Tartan Copice	Hassamu 6-jo 9-chome 2-15	676-6815	7:00~18:00	EX①	⑧	○
Kodomo Plaza Aoitori Miyanosawa	Hassamu 6-jo 9-chome 3-1	590-1146	7:00~18:00	EX①	⑧+	○
Miyanosawa Miraino Tane	Hassamu 7-jo 14-chome 12-1	676-6160	7:00~18:00	EX①	⑧+	△
Hassamu Mirai no Tane	Hassamu 12-jo 4-chome 1-1	676-6065	7:00~18:00	EX①	⑧+	○
Yamanote Chibikko	Yamanote 3-jo 4-chome 1-29	676-6808	7:00~18:00	EX①	⑧+	○

【 Teine Ward 】

Name	Address	Tel	Open	Ext.	Short	Saturday
Kira Kira	Shin-Hassamu 6-jo 2-chome 3-5	664-7565	7:00~18:00	—	⑨	—
Pikkoro Kids Teine ekimae	Teine-honcho 1-jo 4-chome 1-5	691-5215	7:00~18:00	EX①	⑧+	○
Teine Ajisai Ⅱ	Teine-honcho 2-jo 2-chome 4-16	691-0111	7:00~18:00	EX①	⑧+	△
Teine Ajisai	Teine-honcho 2-jo 2-chome 4-20	695-4150	7:00~18:00	EX①	⑧+	○
Salare Tomioka	Tomioka 1-jo 4-chome 1-1	699-6326	7:00~18:00	EX①	⑨	○
Tomioka Nin Nin	Tomioka 2-jo 2-chome 10-18, Teine-ku	311-0022	7:00~18:00	EX①	⑧	○
Takara no Mori Hoshioki	Hoshioki 1-jo 3-chome 4-1	685-1777	7:00~18:00	EX①	⑧	○
Salare Maeda	Maeda 6-jo 15-chome 3-30	215-5801	7:00~18:00	EX①	⑨	○
S.T Nursery SCHOOL Teine-Maeda	Maeda 6-jo 16-chome 1-2	688-9190	7:00~18:00	EX①	⑧	○



## ☆ Employer-provided Childcare Services (Jigyosho-nai Hoiku Jigyo)

Infants and young children who cannot be looked after at home for reasons such as employment can be taken care of at employer-provided childcare facilities along with children of the company's employees.

- ☐ **Days:** Monday through Saturday (except for the year-end and New Year's holidays (Dec. 29 to Jan. 3) and national holidays) \*some facilities are closed on Saturdays.
- ☐ **Application:** Regional Ward Office (Children and Family Welfare Section) p.70-71
- ☐ **Fee:** The fee varies depending on the child's age, the residential tax amount of each household and other factors

### ★ List of Facilities Offering Employer-provided Childcare Services as of April 1, 2021

Name	Address	Tel	Open	Ext.	Short	Saturday
Co-op Sapporo aurinko	Kita 18-jo Higashi 18-chome 1-2, Higashi-ku	214-1942	7:00~18:00	EX①	⑨	○
HeartKids Heart Center	Kita 49-jo Higashi 16-chome 3-1, Higashi-ku	784-8230	7:00~18:00 /57D	EX②	⑨	○
Jun-nome	Sakae-dori 3-chome 1-33, Shiroishi-ku	855-5000	8:00~19:00	EX①	⑨	○
Sapporo Dream	Suishamachi 1-chome 8-8, Toyohira-ku	811-2848	7:30~18:30	EX①	⑧	○
Kodomo Club Shirakaba	Tsukisamu-higashi 3-jo 18-chome 20-48, Toyohira-ku	799-1444	7:30~18:30	EX②	⑧	○
Makomanai Chutonchi Chonai Takujisho	Makomanai 17, Minami-ku	583-0090	7:15~18:15	EX②	⑧15	—
Leven Soramame Kotoni	Hachiken 2-jo Nishi 4-chome 1-5, Nishi-ku	624-5012	7:00~18:00	EX① 7:00~18:00	⑧+	○
Monami no Sato	Ishiyama 1-jo 1-chome 12-15, Minami-ku	588-7781	7:00~18:00	EX②	⑧	○
Hachiken Nishi Momiji	Hachiken 7-jo Nishi 11-chome 2-15, Nishi-ku	688-6168	7:00~18:00	EX①	⑨	△
Sakuranbo	Hassamu 17-jo 3-chome 4-25, Nishi-ku	662-2121	7:00~18:00	EX①	⑧	○
Hassamu Koguma	Hassamu 13-jo 4-chome 13-56, Nishi-ku	671-5151	7:30~18:30	—	⑧+	○

### ★Extended-time childcare★

EX①: extended childcare for one hour later than the regular time

EX②: extended childcare for two hours later than the regular time

### ★Short-time childcare★

⑧ : from 8:00 to 16:00

⑧15: from 8:15 to 16:15

⑧+: from 8:30 to 16:30

⑨: from 9:00 to 17:00

### ★Children's age groups★

57D: childcare after maternity leave (57 days old and older)

### ★Saturday childcare (Saturday) ★

○ : Provided

△ : Provided but other facilities

## Unauthorized day care facilities

Unauthorized day care facilities include company-led childcare services "kigyo-syudo-gata hoiku jigyo" . A list of unauthorized day care facilities is available at the Children and Family Welfare Section of the ward offices (see p.70-71). It can also be found at the "Sapporo Kosodate Jouhou Site" website (<https://kosodate.city.sapporo.jp/> :Japanese only).

\* A user of a company-led childcare services "kigyo-syudo-gata hoiku jigyo" may be required to obtain certification from the municipal government in his/her area. (see p.23 for the detail)

## Support Program for Elementary School Children

For Families where the parents are not at home due to work and other reasons:

### ★Children's clubs (Jido Club)

Children's clubs are established at a kids' halls and kids' "mini" halls. Children go directly to the club after school. Only students attending the relevant elementary schools can use the kids' "mini" halls.

- Target  
Students in grades 1 to 6 of elementary school
- Opening days and hours  
Every day after school until 19:00, except for the year-end and New Year's holidays (Dec. 29 – Jan. 3), Sundays and national holidays. Available from 8:00 to 19:00 on Saturdays and school holidays.
- Fee: Free of charge.  
However, when using these facilities before 8:45 or after 18:00, a monthly usage fee of 2,000 yen is charged.

◆ Inquiries: Children's Activity Planning Section, Bureau of the Future of Children ☎ 011-211-2989  
Sapporo Youth & Women's Activity Association ☎ 011-671-4121

★ Further information on Children's clubs (kids halls, kids "mini" halls), Private sector child-rearing societies: [https://www.city.sapporo.jp/kodomo/ikusei/l02\\_3.html](https://www.city.sapporo.jp/kodomo/ikusei/l02_3.html)



## Leaving a Child in Someone's Care Temporarily

### ☆ Temporary Care at Kindergartens and Centers for Early Childhood Education and Care

Kindergartens and Centers for Early Childhood Education and Care that have satisfied the requirements prescribed by the City of Sapporo and that have been authorized by the city may provide childcare in the same way as day care centers. There are three types of care: kindergarten care, general care, and 2-year-old care. See the list of Centers for Early Childhood Education and Care (p.19-24) and Kindergartens (p.25).

- Eligibility: 【Kindergarten care】 Pupils enrolled primarily in kindergartens  
【General care】 Preschoolers other than the above  
\*Eligible ages and other qualifications vary by facility.  
【2-year-old care】 2-year-old children who obtain certification (except for CECEC)
- Days: Monday through Friday (also on Saturdays at some facilities)  
\*In principle, the service is available during summer vacations and other long holidays.  
\*Except for national holidays, the year-end and New Year's holidays (Dec. 29 to Jan. 3), and days off determined by each facility.
- Hours: 10 hours or more (the kindergarten care service includes formal kindergarten education.)  
\*The 2-year-old care offers 11 hours or more.
- Application: Please apply directly to each facility.  
\*Any parents using 2-year-old care are required to obtain certification.
- Childcare fees: Each facility sets its own fees, so please contact the facility that offers temporary care directly.  
\*Childcare fees for kindergarten care/General care can be waived by the free early childhood education and care program. In order to receive benefits, it is necessary to receive certification for Facility Use Benefits (see page 28) in advance.
- ◆ Inquiries: Bureau for the Future of Children (Day Care Promotion Section) ☎ 011-211-2346

### ☆ Temporary Care at the Day Care Centers

For temporary care at an authorized day care center, please see page 24 (page 27 to 37 for a list of such facilities). Temporary care is also provided at unauthorized day care facilities. Please contact the individual facilities for details.

(See "Sapporo Kosodate Jouhou Site" website <https://kosodate.city.sapporo.jp/> :Japanese only).

## ☆ Sapporo Family Support Center Program

This is a system that supports families raising children by establishing membership organizations consisting of parents who want help with childcare and people who wish to assist such parents. Prior registration is required.

### ★Sapporo Childcare Support Center

Various childcare services are available including taking children to and picking them up from the day care center/kindergarten, looking after them after day care center, kindergarten or children's club, and taking care of them so that parents can be refreshed.

◆ Inquiries: Sapporo Social Welfare Council ☎ 011-623-2415 Fax: 011-623-4011

### ★Sapporo Child Emergency Support Network

Emergency support services are available, including day care, night care and pick-up and drop-off services when children become sick or when parents have unexpected overtime work or a business trip. A financial support system to cover a part of fees may also be available.

◆ Inquiries: NPO Hokkaido Child Care Support Workers ☎ 011-621-6626 Fax: 011-632-5181

## ☆ Day Service for Children and Infants Recovering from Illness

If children who are recovering from sickness cannot be looked after at home, they can temporarily be taken care of at facilities attached to medical institutions in the city. Prior registration is required. Contact facilities for details.

### ★Tenshi Child Day Service Center ☎ 011-711-0101

Kita 12-jo Higashi 3-chome, Higashi-ku (attached to Tenshi Hospital)

### ★Higashikariki Sukoyaka Child Day Service Center ☎ 011-790-2030

Higashi-kariki 10-jo 1-chome, Higashi-ku (attached to Higashikariki Sukoyaka Clinic)

### ★Kin-ikyo Kikusui Child Day Service Center ☎ 011-823-9272

Kikusui 4-jo 1-chome, Shiroishi-ku (attached to Kin-ikyo Kikusui Child Clinic)

### ★Nire no Kai Child Day Service Center ☎ 011-899-3336

Atsubetsu-cho Shimo-Nopporo 49, Atsubetsu-ku (attached to Nire no Kai Child Clinic)

### ★Hokkaido Child Day Service Center ☎ 011-831-3300

Nakanoshima 1-jo 8-chome, Toyohira-ku (attached to Hokkaido Hospital)

### ★Teine Keijinkai Child Day Service Center ☎ 011-681-3266

Maeda 1-jo 12-chome, Teine-ku (adjacent to Teine Keijinkai Hospital)

## ☆ Short-term Childcare Support Program (Kodomo Short Stay)

If parents cannot look after their children temporarily due to sickness, childbirth, nursing care, an accident, a business trip or a ceremonial event, the children can be taken care of at an orphanage or infant home.

- ◆ Inquiries: Regional ward office (Children & Family Welfare Section) p.70-71  
Sapporo Child Consultation Center ☎ 011-622-8630

### 【Facilities provide Short-time Childcare Support Program (Child Short Stay)】

Name	Address	Tel
Sapporo Nanso-en	Sakaigawa 1-chome, Chuo-ku	011-561-0668
Kosei Gakuen	Shin-Kotoni 4-jo 9-chome, Kita-ku	011-762-7457
Hakuyo-so	Shinoro 2-jo 9-chome, Kita-ku	011-776-0601
Sapporo Nyuji-in	Kawakita 2254-1, Shiroishi-ku	011-879-6262
Hitsujigaoka Yogo-en	Tsukisamu-higashi 1-jo 17-chome, Toyohira-ku	011-851-3279
Sapporo Ikuji-en	Fujino 6-jo 2-chome, Minami-ku	011-591-6601



## Consultation Services

### ★ General Concerns About Childcare

#### ◆ Child Care Information (telephone/meeting/home visit)

- ☎ Regional ward office (Childcare Support Section) p.70-71 / (Child Care Information) p.16  
Open: Monday through Friday, 8:45 – 17:15  
(except for the year-end and New Year's holidays (Dec. 29 – Jan. 3) and national holidays)

#### ◆ Regional Day Care & Child-rearing Support Center (Cheerful) (telephone/meeting/home visit)

- ☎ Regional Day Care & Child-rearing Support Center (Cheerful) p.3  
☎ Open: Monday through Saturday.  
Telephone consultation: 8:45 – 17:15 / Meeting: 9:00 – 17:00  
(except for the year-end and New Year's holidays (Dec. 29 – Jan. 3) and national holidays)

#### ◆ Center for Early Childhood Education and Care “Nijiirō” (telephone/meeting/home visit)

- ☎ 011-883-3044  
Open: Monday through Saturday.  
Telephone consultation: 8:45 – 17:15 / Meeting: 9:00 – 17:00  
(except for the year-end and New Year's holidays (Dec. 29 – Jan. 3) and national holidays)

#### ◆ Child Care General Support Center (telephone/meeting)

- ☎ 011-208-7961  
Open: Every day  
Telephone: 8:45 – 17:15 / Meeting: 9:00 – 17:00  
(except for the year-end and New Year's holidays (Dec. 29 – Jan. 3))

#### ◆ Day Care Centers (telephone)

- ☎ Day care centers p.31-41  
Open: Monday through Friday: 9:00 – 17:00  
(except for the year-end and New Year's holidays (Dec. 29 – Jan. 3) and national holidays)

### ★ Information on Childcare Services

#### ◆ Health centers - Childcare coordinator (telephone/meeting)

- ☎ Regional ward office (Child and Family Welfare Section) p.70-71  
Consultation/appointment-time: Monday-Friday: 10:00 – 16:45  
(except for the year-end and New Year's holidays (Dec. 29 – Jan. 3) and national holidays)

## ★ **Child Education Consultations – Development, Education, Entering School etc.**

### ◆ **Sapporo Preschool Education Center (telephone/meeting)**

☎ 011-671-3454

Open: Monday through Friday, 8:45 – 17:15

(except for the year-end and New Year's holidays (Dec. 29 – Jan. 3) and national holidays)

\*Please make an appointment for a meeting.

### ◆ **Municipal Kindergartens/Centers for Early Childhood Education and Care(telephone/meeting)**

☎ Kindergartens/Centers for Early Childhood Education and Care marked with a ★ on p.19-25

Open: Monday through Friday \*Consultation hours differ by facility.

(except for the year-end and New Year's holidays (Dec. 29 – Jan. 3) and national holidays)

\*Please make an appointment for a meeting.

## ★ **Consultations on Home Education & Discipline**

### ◆ **Kindergartens/Centers for Early Childhood Education and Care (telephone)**

☎ Kindergartens/Centers for Early Childhood Education and Care p. 19-25

\*Consultation hours differ by facility

## ★ **Health Consultations – Expectant and Nursing Mothers**

### ◆ **Health centers (telephone/meeting/home visit)**

☎ Regional ward office (Health Promotion Section) p. 70-71

☎ Open: Monday through Friday, 8:45 – 17:15

(except for the year-end and New Year's holidays (Dec. 29 – Jan. 3) and national holidays)

## ★ **Home Visit – Consultation with Childcare workers**

\* Prior application by telephone is required.

### ◆ **Regional Day Care & Child-rearing Support Center (Cheerful) (home visit)**

☎ Regional Day Care & Child-rearing Support Center (Cheerful) p. 3

Reservations by Phone: Monday through Friday, 8:45 – 17:15

Home visit: Monday through Friday 10:00 – 16:00 (about one hour at a time)

(except for the year-end and New Year's holidays (Dec. 29 – Jan. 3) and national holidays)

### ◆ **Center for Early Childhood Education and Care “Nijihiro” (home visit)**

☎ 011-883-3044 (Reservations by Phone: Monday through Friday, 8:45 – 17:15)

Home visit: Monday through Friday 10:00 – 16:00 (about one hour at a time)

(except for the year-end and New Year's holidays (Dec. 29 – Jan. 3) and national holidays)

### ◆ **Child Care Information (home visit)**

☎ Regional ward office (Childcare Support Section) p.70-71 / (Child Care Information) p.16

Reservations by Phone: Monday through Friday, 8:45 – 17:15

Home visit: Monday through Friday 10:00 – 16:00 (about one hour at a time)

(except for the year-end and New Year's holidays (Dec. 29 – Jan. 3) and national holidays)

## ★ **Consultations on School Education**

Consultations on education, including children who are slow to learn, have difficulty studying or issues with truancy/delinquency etc.

### ◆ **Sapporo Education Center's Education Counseling Room (telephone/meeting)**

☎ 011-671-3210

Open: Monday through Friday, 8:45 – 17:15

(except for the year-end and New Year's holidays (Dec. 29 – Jan. 3) and national holidays)

\*Please make an appointment for a meeting.

## ★ **Consultations on Child Development**

Consultation on childcare for developmental delays, handicaps, anxiety etc.

### ◆ **Sapporo Child Development General Support Center (Chikutaku) (telephone/e-mail/meeting by appointment)**

☎ 011-821-9861 (community support office)

Open: Monday through Friday, 9:00 – 17:00

(except for the year-end and New Year's holidays (Dec. 29 – Jan. 3) and national holidays)

E-mail consultations: [chikutaku-soudan@city.sapporo.jp](mailto:chikutaku-soudan@city.sapporo.jp)

### ◆ **Sapporo Child Consultation Center (in the Child Welfare Center) (telephone/meeting)**

☎ 011-622-8630

Open: Monday through Friday, 8:45 – 17:15

(except for the year-end and New Year's holidays (Dec. 29 – Jan. 3) and national holidays)

\*Please make an appointment for a meeting.

### ◆ **Health centers (telephone/meeting)**

☎ Regional ward office (Health Promotion Section) p. 70-71

\*Consultation days and hours are vary by ward office. \*Please make an appointment for a meeting.

## ★ **Consultations on Rehabilitation of Disabled Children**

On developmental delays, upbringing of children with developmental disabilities

### ◆ **Hokkaido Christian Center's Family Welfare Counseling Room Medical and childcare consultations (telephone/meeting)**

☎ 011-746-6374

Open: Monday through Friday, 9:30 – 16:30

(except for the year-end and New Year's holidays (Dec. 28 – Jan. 5) and national holidays)

\*Please make an appointment by telephone.

Consultation regarding children with disabilities, support with using welfare services, etc.

### ◆ **Consultation Support Office for Disabled Individuals (telephone/meeting/home visit consulting/e-mail)**

There are several offices in each ward. Please call Sapporo Citizen Contact Center (☎011-222-4894) for more information.



## ★ **Consultations on Children Mental Health**

Information on appropriate medical institutions, etc.

\*Please consult with your school, office, health center, or clinic first. It is better to consult through a school, etc. in order to receive appropriate support. (You can also consult with us directly)

### ◆ **Ujiie Kinen Clinic for Children (telephone)**

☎ 080-3231-6164 (Weekdays: 10:00 –13:00 / 14:00 – 15:00)

Responsible Areas: Chuo-ku, Higashi-ku

### ◆ **Goryokai Medical Corporation (telephone)**

☎ 011-771-5660 (Weekdays: 10:00 –12:00 (noon) / 13:00 – 15:00)

Responsible Area: Kita-ku

### ◆ **Sapporo Child Development General Support Center**

#### **Community Support Office (telephone)**

☎ 090-3111-8061 (Weekdays: 10:00 –12:15 / 13:00 – 15:00)

Responsible Areas: Shiroishi-ku, Toyohira-ku

### ◆ **Nirenokai Kodomo Clinic (telephone)**

☎ 011-898-4766 (Weekdays: 10:00 –12:00 (noon) / 13:00 – 15:00)

Responsible Area: Atsubetsu-ku

### ◆ **Tokiwa Clinic “Counseling Room Cosmos” (telephone)**

☎ 011-593-0556 (Weekdays: 10:00 –12:00 (noon) / 13:00 – 15:00)

Responsible Areas: Kiyota-ku, Minami-ku

### ◆ **Tokiwa Clinic “Counseling Room Ajisai” (telephone)**

☎ 080-2878-0556 (Weekdays: 10:00 –12:00 (noon) / 13:00 – 15:00)

Responsible Areas: Nishi-ku, Teine-ku

## ★ **Childcare Counseling – Childcare & Home Education**

### ◆ **Hokkaido Lifelong Learning Promotion Center (meeting)**

Appointments: Monday through Friday, 9:00 – 17:00

Counseling: Tuesday through Thursday, 13:00 -16:00 (about one hour at a time)

(except for the year-end and long-term holidays (Dec. 26 – Jan. 4) and national holidays)

☎ 011-261-4545    **Email:** Kosodate1@manabi.pref.hokkaido.jp

\*Please make an appointment.

### ◆ **Hokkaido Family Life General Counseling Center (telephone/meeting)**

☎ 011-251-5394, 011-251-6408

Open: Monday through Saturday, 10:00 – 12:00 (noon), 13:00 – 16:00

(except for the year-end and New Year's holidays (Dec. 29 – Jan. 3) and national holidays)

\*Please make an appointment for a meeting.

★ **Consultation on Family Environment, Abuse, Truancy, Juvenile Delinquency, Childcare Stress, Upbringing, etc.**

◆ **Office for Consultation on Family Matters (telephone/meeting)**

☎ Regional ward office (Family & Children's Consultation Office) p. 70-71

Open: Monday through Friday, 8:45 – 17:15

(except for the year-end and New Year's holidays (Dec. 29 – Jan. 3) and national holidays)

◆ **Kousyou Child & Family Support Center (telephone/meeting/home visit consultations/e-mail)**

☎ 011-765-1000 E-mail: [kodomo@kousyou.or.jp](mailto:kodomo@kousyou.or.jp)

Open: 8:00 – 18:00 (open all year round)

\*Please make an appointment for an interview consultation.

◆ **Hitsujigaoka Child & Family Support Center (You Yu Call) (telephone/meeting/home visit/e-mail)**

☎ 011-854-2415 Fax: 011-836-4152 E-mail: [soudan.hitujigaoka2415@hitujigaokayougoen.or.jp](mailto:soudan.hitujigaoka2415@hitujigaokayougoen.or.jp)

Open: 9:00 – 18:00 (open all year round)

\*Please make an appointment.

◆ **Sapporo Minami Child & Family Support Center  
(telephone/meeting/home visits/guidance at the center)**

☎ 011-591-2200 (available for 24 hours for emergencies)

◆ **Sapporo Infant Home Child & Family Support Center (telephone/meeting/home visit)**

☎ 011-879-6264 Fax: 011-879-6265

Open: Monday through Friday, 9:00 – 17:30 (available for 24 hours for emergencies)

\*Please make an appointment.

◆ **Sapporo Children Assistance Center (Children's Rights Monitoring Organization)  
(telephone/meeting/e-mail)**

☎ 011-211-3783 (for adults) ☎ 0120-66-3783 (number exclusive for children)

E-mail: [assist@city.sapporo.jp](mailto:assist@city.sapporo.jp)

Website: <https://www.city.sapporo.jp/kodomo/assist>

Open; Monday through Friday, 10:00 – 20:00 / Saturday, 10:00 – 15:00

(except for the year-end and New Year's holidays (Dec. 29 – Jan. 3) and national holidays)

◆ **Sapporo Hikikomori Community Support Center (telephone/meeting/e-mail)**

☎ 011-863-8733 (For consultation only)

Telephone counseling: (weekdays) 9:30-12:00, 13:00-16:00

Counseling in person: (weekdays) 9:00-17:00

(except for the year-end and New Year's holidays (Dec. 29 – Jan. 3))

◆ **Sapporo Child Consultation Center (in the Child Welfare Center) (telephone/meeting)**

☎ 011-622-8630

Open: Monday through Friday, 8:45 – 17:15

(except for the year-end and New Year's holidays (Dec. 29 – Jan. 3) and national holidays)

\*Please make an appointment for a meeting.

◆ **Childcare Security Hotline (counseling on child abuse) (telephone)**

☎ 011-622-0010 (available 24 hours and throughout the year)

◆ **Child Consultation Center on child abuse 189 (telephone)**

☎ 189 (available 24 hours and throughout the year)

★ **Consultation on Children's Rights - bullying, corporal punishment, abuse, etc.**

◆ **Sapporo Legal Affairs Bureau Children's Rights 110 Emergency Service (telephone/meeting/e-mail)**

☎ 0120-007-110 (uniform number from anywhere in Japan)

Monday through Friday, 8:30 – 17:15.

(except for the year-end and New Year's holidays (Dec. 29 – Jan. 3) and national holidays)

\* Internet Consultation service: <https://www.jinken.go.jp/>



★ **Consultation on Domestic Violence**

◆ **Health centers (telephone/meeting)**

☎ Regional ward office (Health Promotion Section) p. 70-71

☎ Open: Monday through Friday: 9:45 – 16:30

(except for the year-end and New Year's holidays (Dec. 29 – Jan. 3) and national holidays)

◆ **Sapporo Spousal Violence Counseling Center (telephone/meeting)**

☎ 011-728-1234 FAX: 011-738-1231

Monday through Friday, 8:45 – 20:00

Saturday, Sunday and national holidays, 11:00 – 17:00

(except for the year-end and New Year's holidays (Dec. 29 – Jan. 3))

\*Please make an appointment.

★ **Consultation on Using Welfare Services**

◆ **Ward Office (telephone/meeting)**

☎ Regional ward office (Health & Welfare (for consultation) Section) p. 70-71

Monday through Friday, 8:45 – 17:15

(except for the year-end and New Year's holidays (Dec. 29 – Jan. 3) and national holidays)

## ★ **Counseling for Mental Health and Dependency Problems**

### ◆ **Sapporo Mental Care Center (Sapporo Mental Health Center) (telephone)**

☎ 011-622-0556 Weekdays, 9:00 – 17:00

☎ 0570-064-556 Weekdays, 17:00 – 21:00

Saturday, Sunday, and national holidays 10:00 – 16:00

#### **(telephone/meeting)**

☎ 011-640-7183 (Dependency Consultation only) Weekdays, 13:00 – 16:00

(except for the year-end and New Year's holidays (Dec. 29 – Jan. 3) and national holidays)

## For Concerns about Child's Development

### ☆ When you wish to consult about your child's development

#### ★Sappo Child Square (Sappo Kodomo Hiroba)

Support is provided through fun activities for children who have been introduced by health centers as suspected cases with development problems. Support is also provided for their parents. The health centers in each ward office, Child Welfare Center and kids' halls are used as the venues for activities.

- ◆ Inquiries: Child Consultation Center (Guidance on Medical Treatment and Education section)  
☎ 011-622-8910

#### ★Sapporo Child Development General Support Center (Chikutaku)

This facility provides comprehensive medical and welfare support for the physical and mental development of children and their emotional/behavioral issues.

- ◆ Inquiries: Sapporo Child Development General Support Center (Community Support Office)  
☎ 011-821-9861

#### ★Sapporo Child Development Treatment Center

This clinic provides early diagnosis and rehabilitation for children suspected of delayed motor development and disabilities, support for child-rearing households and consultation services.

- Clinical departments: Pediatrics / Orthopedics
- ◆ Inquiries: Sapporo Development Treatment Center ☎ 011-622-8640

#### ★Sapporo Child Consultation Center

This center provides consultations on delayed speech, delayed mental and physical development and disabilities, and offers advice and support on the use of training/rehabilitation facilities for specific disabilities. \*Please make an appointment in advance for meeting consultations.

Consultation hours: Monday through Friday 8:45 – 17:15

(except for the year-end and New Year's holidays (Dec. 29 – Jan. 3) and national holidays)

- ◆ Inquiries: Sapporo Child Consultation Center ☎ 011-622-8630

### ☆ Support Program for child development

#### ★ Child development support/ Support on physical development of children/ After school day services/ Support for visiting day care center for disabled children

Guidance on basic daily living activities and training in adjusting to group participation are provided for disabled children. Parents choose the company providing the daycare service and sign a contract directly (within the range of the allowance set by each ward office).

- ◆ Inquiries: Regional ward office (Welfare Support Section) p. 70-71

#### ★ Short stay

Provide temporary care for children with mental and physical disabilities. Parents choose the facility and sign a contract directly (within the range of the allowance set by each ward office).

- ◆ Inquiries: Regional ward office (Welfare Support Section) p. 70-71

## For Single-parent Families

### ☆ Consultation services

#### ★ Counseling for single parents

Counselors provide consultations on daily living, medical care and employment to promote the welfare of single-parent families.

Monday through Friday: 9:45 – 16:30

◆ Inquiries: Regional ward office (Mother-Child & Women's Counselor) p. 70-71

#### ★ Sapporo Support Center for Single-Parent Families

##### • Consultations for single-parent families (on daily living of single parents and widows)

Consultations are also provided for those who have not become divorced yet. Consultations on the cost of raising children, related laws and mental health (please make an appointment)

◆ Inquiries: Sapporo Support Center for Single-Parents Families

Address : Odori Nishi 19-chome, Chuo-ku ☎ 011-631-3320

☎ 011-631-3353 Consultations for general

☎ 011-632-7132 Consultations for fathers

☎ 011-631-4257 Consultations for job-seeking

☎ 011-631-3353 Consultations for laws and mental health ( meeting / please make an appointment )

### ☆ Daily Life and Day Care Program

#### ★ Single-parent Family Daily Life Support Program

Support staff will be sent to the family who are raising preschoolers and need daily life support temporarily due to overtime, job hunting, illness and other reasons (User fees will be charged).

#### ★ Livelihood support

Provides support for daily life that is not covered by the Livelihood Support for Single Parent Families, such as picking children up from daycare centers when working late. (a fee will be charged).

#### ★ Holiday Mom (Holiday day care program)

When members cannot take care of their children on Sundays and holidays due to work or ceremonial events, children over 2 years old can be looked after at the nursery room of the Sapporo Support Center for Single-Parent Families.

Childcare is also provided for single-parents who have to go to the family court for mediation. (\*please make an appointment, a fee is charged).

◆ Inquiries: Sapporo Single Parents and Children's Welfare Association ☎ 011-631-3270

## ☆ Study Support for Children

### ★Single-parent Family Study Support Volunteer Project

Student and other volunteers help children in single-parent households (from third-grade students to third-year junior high school students) with their studies such as at local public facilities. The volunteers also provide consultation services about careers and other matters. (Application required, free of charge)

- ◆ Inquiries: Sapporo Support Center for Single-Parent Families  
Odori Nishi 19 Chome Social Welfare Center 1F, Chuo-ku  
☎011-631-3320

## ☆ Facilities to support the lives of single-parent families

The facilities provide shelters for single-parent families and support their lives to promote independence if living, housing and employment problems affect child welfare.

In addition to a place to live, support on becoming independent, consultations and guidance are also provided to the mothers and children living in the facilities.

- ◆ Inquiries: Regional ward office (Children and Family Welfare Section) p.70-71

### 【List of Facilities to support the lives of single-parent families】

Name	Address	Tel
Suzuran	Kita 1-jo Higashi 8-chome, Chuo-ku	011-251-8302
Fushimi-ryo	Fushimi 2-chome, Chuo-ku	011-561-2021
Sapporo-shi Shiragiku-so	Kikusui 5-jo 2-chome, Shiroishi-ku	011-811-3053
Sapporo Airin-so	Toyohira 4-jo 3-chome, Toyohira-ku	011-841-2777
Moiwa-so	Kawazoe 5-jo 4-chome, Minami-ku	011-571-9585

## Aid and Allowances

### ☆ Allowances

Various criteria are set, including limits based on parents' income.

#### ★Child allowance (Jidou teate)

This allowance is provided to people raising young children until the child graduates from junior high school.

- Under age 3: 15,000 yen per month (across the board)
- Age 3 – until the child graduates from elementary school:
  - First/second child: 10,000 yen per month
  - Third and following children: 15,000 yen per month
- Junior high school student: 10,000 yen per month (across the board)
- Child whose parents' income exceeds the prescribed limit: 5,000 yen per month (across the board)

\*If a child is born or if other events occur so that the requirements for receiving the allowance are met, please register within 15 days.

#### ★Child-care allowance (Jidou fuyo teate)

This allowance is provided to single parents (mother or father) with dependent children whose livelihood is not supported by the other parent (father or mother), or to foster parents. There is an income-based limit and restriction on double payment of the child-care allowances and public pension.

#### ★Special childcare allowance (Tokubetsu jidou fuyo teate)

This allowance is provided to people who are raising children under the age of 20 with severe or moderate disabilities, unless the children are living in child welfare facilities. There is an income-based limit on allowance.

#### ★Allowance for orphans due to disasters (Saigai iji teate)

This allowance is provided to people raising children who have lost one or both parents (including children whose parents have become severely disabled) due to a traffic accident, work tragedy or unexpected disaster, and who have not finished compulsory education yet.

◆ Inquiries on allowances above: Regional ward office (Welfare Subsidy Section) p.70-71

#### ★Allowance for disabled children (Shogaiji fukushi teate)

This allowance is provided for disabled children who are under the age of 20 and who need full-time care for daily living, unless they are living in child welfare facilities. There is an income-based limit on allowance.

◆ Inquiries: Regional ward office (Welfare Support Section) p.70-71



## ☆ Aid for medical expenses

### ★Child medical assistance program (Kodomo iryohi josei)

Financial aid is provided to partly cover the medical expenses of children until they graduate from junior high school (until the end of the fiscal year when the child turns 15). For junior high school students, only hospitalization costs will be covered. Prior application is necessary to receive aid. There is an income-based limit on aid.

### ★Aid for the medical expenses of single-parent families

Financial aid is provided to children aged 18 years or younger (until the end of the fiscal year when the child turns 18) and their parents in single-parent families. Prior application is necessary to receive aid. The aid partly covers the expenses for hospitalization and regular hospital visits of children and for hospitalization of parents. There is an income-based limit on aid.

### ★Aid for medical expenses of people with severe disabilities

Financial aid is provided for people with severe disabilities. Prior application is necessary to receive aid. The aid partly covers the expenses for hospitalization and hospital visits. There is an income-based limit on aid.

◆ Inquiries on allowances above: Regional ward office (Welfare Subsidy Section) p.70-71

## ☆ For entering elementary school

### ★Support system for entering school (Shugaku enjo seido)

The expenses of school supplies, school trips and meals are subsidized for financially struggling households with elementary/junior high school students.

◆ Inquiries: The school that your child will attend

Board of Education (Education Promotion Section) ☎ 011-211-3851

## ☆ Child medical benefits

### ★Benefits for medical and infant care services

The necessary medical benefits are provided for premature babies who have to be hospitalized or taken care of in a facility.

### ★Medical care to support independence (medical and childcare services)

Medical benefits are provided to children under the age of 18 years with disabilities or the possibility of disability so that they can undergo the necessary surgery or other medical care to recover their health.

### ★Aid for the medical expenses of specific chronic childhood diseases

Medical benefits are provided to patients with chronic childhood diseases specified by the national government.

### ★Benefits for medical and childcare services for children with tuberculosis

Medical benefits are provided to the medical expenses and partly cover the costs of study items and daily necessities for children with tuberculosis under the age of 18 years who need long-term hospitalization.

◆ Inquiries on above types of aids: Regional ward office (Health Promotion Section) p. 70-71

### ★Aid for the medical expenses of specified diseases

Medical benefits are provided to patients with diseases specified by the government.

◆ Inquiries: Regional ward office (Health & Prevention Section) p. 70-71

## ☆ Mutual Aid System for Dependents with Mental/Physical Disabilities

A guardian who provides for a child with mental and/or physical disabilities can apply for mutual aid system for the future of the dependent. The policy holder (the guardian) pays a monthly premium for his/her lifetime, and the dependent will receive a fixed income annuity for life upon the death or severe disability of the policyholder. The premium reduction measures may also be applicable.

### Application requirements:

- You are a guardian who supports a child with mental and/or physical disabilities.
- You have an address in Sapporo.
- You are in healthy condition and qualified for life insurance coverage.
- You are under 65 years of age as of April 1 of the fiscal year you will apply for the coverage.

### ◆ Inquiries:

Regional ward office (Welfare Subsidy Section) p.70-71

## **Support Programs for Mother and Child Health**

### **☆ Home Visit Service for Newborns and Mothers**

Health nurses or instructors from health centers visit all homes with babies aged four months or younger to provide childcare consultations and health guidance.

- ◆ Inquiries: Regional ward office (Health Promotion Section) p.70-71

### **☆ Newborn Hearing Screening**

A subsidy will be provided for a portion of the cost for newborn hearing tests taken at medical facilities for childbirth.

- ◆ Inquiries: Health Promotion division of each ward p.70-71

### **☆ Health checkups for infants and young children**

Health checkups are conducted to detect any disease or abnormality early and to provide specialized health guidance and childcare consultations according to the child's growth and development.

1. Health checkup of children aged 4 months: A written notice of the schedule and other details is sent.
2. Health checkup of children aged 10 months: Information is provided at the time of the health checkup for children aged 4 months.
3. Health checkup of children aged 1 year and 6 months: A written notice of the schedule and other details is sent.
4. Health checkup of children aged 3 years: A written notice of the schedule and other details is sent.
5. Health checkup of children aged 5 years: A written notice of the schedule and other details is sent.

- ◆ Inquiries: Regional ward office (Health Promotion Section) p.70-71

### **☆ Neonatal Mass Screening**

Blood testing for newborns can be used to detect 26 diseases, including hormone abnormalities and metabolic disorders. To apply, please read the pamphlet provided at obstetrics medical facilities.

### **☆ Biliary atresia screening**

When pregnancy is registered, a test paper for biliary atresia is provided together with a maternal and child health handbook. Please submit the paper to a medical institution in Sapporo at the time of the 1-month health checkup of the child, or mail it to the Sapporo Institute of Public Health.

- ◆ Inquiries: Institute of Public Health ☎011-841-7672 (Kikusui 9-jo 1-chome, Shiroishi-ku)

## ☆ Consultations on dental and oral hygiene

Consultations on dental and oral hygiene and information on seminars about the prevention of cavities are provided.

◆ Inquiries: Regional ward office (Health Promotion Section) p.70-71

Health Promotion Section, Sapporo Public Health Office

☎ 011-622-5151 (WEST 19 bldg. 3F, Odori Nishi 19-chome, Chuo-ku)

## ☆ Postpartum care program (Sango care Jogyo)

A midwife will provide care to mothers with newborn babies, who can't get enough support with household chores or baby care from their family and who therefore feel very tired, blue and/or anxious about raising children. You can stay overnight in the clinic or just during the day.

□ Eligibility: Babies under 6 months of age and their mothers who live in Sapporo.

Time of Use : A total of 7 days or less can be used per household.

□ Open: Monday – Friday. 9:00 – 12:00 (noon) / 13:00 – 17:00

(Except for the national holidays and the year-end and New Year's holidays (Dec. 29 to Jan. 3))



\*Please make an appointment for the program.

### 【Midwife Clinics offering Postpartum Care Program】\*〈for both overnight stay and day service〉

Name	Address	TEL
Ainosato Josan-in	Ainosato 4-jo 4-chome 6-12, Kita-ku	011-778-1703
Sakura Josan-in	Kita 16-jo Higashi 14-chome 1-10, Higashi-ku	011-721-1778
Tsurube Josan-in	Kitago 3-jo 2-chome 13-8, Shiroishi-ku	011-376-1913
Sango Care House Sun-Sun Josan-in	Kiyota 1-jo 4-chome 3-60, Kiyota-ku	0120-352833
Josan-in E.Ku.Bo.	Hassamu 6-jo 10-chome 10-3, Nishi-ku	011-666-0814

### 【Midwife Clinics offering Postpartum Care Program】〈for day service only〉

Name	Address	TEL
Totto Josan-in	Asahigaoka 2- 2-7, Chuo-ku	090-7516-0211
Yukiko Kangaroo Josan-in	Maruyama-Nishimachi 2-chome 12-15, Chuo-ku	090-1775-5592
Feel Josan-in	Maruyama Nishi-machi 5-chome 4-56, Chuo-ku	090-6994-6699
Tanada Bonyuikuji Sodan-shitsu	Kita 33-jo Higashi 15-chome 4-25-2F-C, Higashi-ku	090-5074-5435
Irohana Josan-in	Yamanote 2-1 2-22, Nishi-ku	080-3233-0452
Imai Bonyuikuji Sodan-shitsu	Hiraoka 4-jo 1-chome 6-5, Kiyota-ku	011-883-7077

◆ Inquiries: Health Promotion Section, Sapporo Public Health Office ☎ 011-622-5151

◆ Regional ward health center p.70-71

## ☆ Inoculations ("Yobo Sesshu")

The routine vaccinations below are provided free of charge (partial subsidy for Mumps) to prevent disease and to control epidemics. For details, please read the guide for inoculations available at health centers.

\*Only vaccinations for infants and children up to age 7 years are listed in the following table. For further information on other vaccinations, please contact the regional health center (p.70-71).

	birth	2MO	3MO	5MO	6MO	7MO	8MO	9MO	1YRS	2YRS	3YRS	4YRS	5YRS	6YRS	7YRS	9YRS
BCG																
Four kinds (DPT-IPV)																
MR										1st stage				2nd stage		
Hib																
Pediatric pneumococcus																
Chickenpox																
Japanese encephalitis																~13YRS
Hepatitis B																
Rotavirus (Rotarix®)		6 week~														
Rotavirus (Rota Teq®)		6 week~														
Mumps																

\*The gray parts indicate the average age range for receiving vaccinations.

The types and timing of vaccinations and the target age groups are subject to change due to legal revisions and other reasons.

- Please check the following before receiving a vaccination:
  - ☐ Have you contacted the medical institution where your child will receive the vaccination in advance?
  - ☐ Is your child feeling well today (i.e., the day of the vaccination)?
  - ☐ Has a sufficient amount of time passed since your child's last inoculation?
  - ☐ Did you bring the Maternal and Child Health Handbook and Vaccination Inquiry Form?
  - ☐ If you have any questions about the vaccination concerned, please ask a doctor or the health center in your ward.
  - ☐ Please ensure your child is accompanied by a parent who is very familiar with his/her health conditions.
  - ☐ Please take your child's temperature before inoculation at the medical institution.
- Post-vaccination precautions
  - ☐ The child should be closely watched for 30 minutes after receiving the vaccination. Ensure that you can contact a doctor immediately if you notice any abnormalities.
  - ☐ Bathing is permitted on the day of the vaccination, but rubbing the vaccination area should be avoided.
  - ☐ Strenuous exercise should be avoided on the day of vaccination.
  - ☐ The child should see a doctor immediately if the vaccination area exhibits any abnormal reactions or the child feels sick.
- The Vaccination Inquiry Form (the guide for inoculations) necessary for vaccinations is issued in conjunction with the Maternal and Child Health Handbook.  
Those who have moved to Sapporo from elsewhere are advised to visit the health center in their ward with the Maternal and Child Health Handbook to apply for issuance of the form.

		Subject (Standard ages for vaccination)	Number of times	Venue	
BCG		Children aged under 12 months (5– 8 months after birth)*	once	Health centers	
Four kinds (DPT-IPV)	1st stage 1st time	Children aged 3 months or older, but under 90 months (3 – 12 months after birth)*	3 times	Designated medical offices in the city that provides vaccinations	
	1st stage 1st booster	Children aged 3 months or older, but under 90 months (12 – 18 months after the 1st time)*	once		
MR	1st stage	12 – 24 months after birth	once		
	2nd stage	Children aged 5 years or older, but under 7 years, one year before entering elementary school	once		
Hib		Children aged 2 months or older, but under 60 months			
		1st time: 2 – 7 months after birth	4 times		
		1st time: 7 – 12 months after birth	3 times		
		1st time: 12 – 60 months after birth	once		
Pediatric pneumococcus		Children aged 2 months or older, but under 60 months			
		1st time: 2 – 7 months after birth	4 times		
		1st time: 7 – 12 months after birth	3 times		
		1st time: 12 – 24 months after birth	2 times		
		1st time: 24 – 60 months after birth	once		
Chickenpox		Children aged 12 months or older, but under 36 months (12 – 15 months after birth for the 1st time)*	2 times		
Japanese encephalitis	1st stage 1st time	6 – 90 months after birth (3 years old)	2 times		
	1st stage booster	6 – 90 months after birth (4 years old)	once		
	2nd stage	children aged 9 years or older, but under 13 years (9 years old)	once		
	Note : Those born before April 1, 2007 and currently under 20 years are eligible for the vaccination as a special measure. For further information, please contact a medical institution or the health center of your regional ward office.				
Hepatitis B		Children aged under 12 months (2– 9 months after birth)	3 times		
Rotavirus infection (Rotarix® )		Children who are between the ages of 6 weeks 0 days and 24 weeks 0 days.	2 times		
Rotavirus infection (Rota Teq®)		Children who are between the ages of 6 weeks 0 days and 32 weeks 0 days.	3 times		
*Note : that in order to avoid the period in which there is a high incidence of intussusception, it is considered desirable to complete the initial inoculation by 14 weeks 6 days after birth.					
Mumps		12 – 36 months after birth 3,000yen cost subsidy	once		

DPT= Diphtheria-pertussis-tetanus; IPV= Inactivated polio vaccine; MR= Measles-rubella

\*Note : When a child receives vaccinations outside the city due to birth taking place in the mother's hometown or for other reasons, the vaccination fees can be refunded (except Mumps). For further information, please contact the health center of your regional ward office.

## Emergency Contact List

### ★ **Emergency Number (Ambulance/Fire Department) ☎119**

- ★ \*English, Chinese, Korean, Portuguese, Spanish, Thai, Vietnamese, Russian, French, Tagalog, Nepalese, & Malay available

### ★ **Sudden illness at night**

Medical facilities give treatment to emergency patients nighttime 7days a week.

#### ◆ **Night-time Emergency Medical Center (Odori Nishi 19-chome ☎011-641-4316)**

- Internal Medicine / Pediatrics: 19:00 -7:00 ※Outpatient reception is until 6:30AM.
- Otorhinolaryngology (ORL) / ophthalmology: 19:00 -23:00
- Call #7119 to ask about other departments.

#### ◆ **Oral Medical Center (Minami 7-jo Nishi 10-chome ☎011-511-7774)**

- Dentistry: 19:00 -23:00

### ★ **Telephone Information Services**

Telephone service to provide medical consultation and help you to find medical facilities.

#### ◆ **Emergency Services Center Sapporo**

**☎ #7119      (☎011-272-7119)**

\* 24/7 available

\*English, Chinese, Korean, Thai, Malay, & Russian available

#### ◆ **Hokkaido Emergency Medical Information Center**

**☎0120-20-8699    ☎011-221-8699 (for mobile phone)**

\* 24/7 available

#### ◆ **Fire Bureau (injury)    ☎011-201-0099**

\* 24/7 available

#### ◆ **Hokkaido Pediatric Emergency Telephone Consultation ☎#8000 ☎011-232-1599**

\*19:00 – 8:00

#### ◆ **Obstetrics and Gynecology Emergency Telephone Consultation ☎011-290-3299**

\*19:00 – 9:00

## ◆ **Poisoning #110**

- ◆ Osaka ☎072-727-2499 \*24/7
- ◆ Tsukuba ☎029-852-9999 \*9:00 – 21:00 all year round
- ◆ Tobacco Poisoning Dial ☎072-726-9922 \*24/7 (Automated phone system)

## ★ **Medical Facilities on-duty**

Medical facilities on-duty are updated daily on newspaper (Hokkaido, Yomiuri) and website below.

### ◆ Injury & disaster (9:00 - 9:00)

Hospitals on-duty gives urgent medical treatment for injury due to traffic accident and disaster.

### ◆ Saturday Afternoon (13:00 -17:00)

Clinics on-duty (internal medicine, pediatrics, obstetrics and gynecology) open on Saturday afternoon.

### ◆ Sunday & Holiday (9:00 - 17:00)

Clinics on-duty (internal medicine, pediatrics, obstetrics and gynecology, otorhinolaryngology, ophthalmology, psychiatry) open on Sunday and national holiday.

### ★ To find clinics and hospitals on-duty:

<https://www.city.sapporo.jp/eisei/tiiki/toban.html>





## Contact information of Each Ward Office and Health Center

【Chuo Ward Office】	☎ 231-2400
Social Work Promotion	☎ 205-3301
Welfare Subsidy	☎ 205-3302
Welfare Support	☎ 205-3304
Health & Welfare (for consultation)	☎ 205-3306

【Chuo Health Center】	☎ 511-7221
Health & Prevention	☎ 511-7222
Health Promotion	☎ 511-7223
Family & Children's Consultation Office	☎ 511-7226
Children & Family Welfare	☎ 511-7224
Mother-Child & Women's Counselor	
Childcare Support	☎ 511-6399

【Higashi Ward Office】	☎ 741-2400
Social Work Promotion	☎ 741-2459
Welfare Subsidy	☎ 741-2461
Welfare Support	☎ 741-2463
Health & Welfare(for consultation)	☎ 741-2466

【Higashi Health Center】	☎ 711-3211
Health & Prevention	☎ 711-3211
Health Promotion	
Family & Children's Consultation Office	☎ 711-3212
Children & Family Welfare	☎ 711-3214
Mother-Child & Women's Counselor	☎ 711-3215
Childcare Support	☎ 712-6331

【Atsubetsu Ward Office】	☎ 895-2400
Social Work Promotion	☎ 895-2471
Welfare Subsidy	☎ 895-2474
Welfare Support	☎ 895-2481
Health & Welfare (for consultation)	

【Atsubetsu Health Center】	☎ 895-1881
Health & Prevention	☎ 895-1881
Health Promotion	
Family & Children's Consultation Office	☎ 895-2497
Children & Family Welfare	☎ 895-2499
Mother-Child & Women's Counselor	☎ 895-2512
Childcare Support	☎ 895-2514

【Kita Ward Office】	☎ 757-2470
Social Work Promotion	☎ 757-2470
Welfare Subsidy	☎ 757-2462
Welfare Support	☎ 757-2464
Health & Welfare (for consultation)	☎ 757-2509

【Kita Health Center】	☎ 757-1181
Health & Prevention	☎ 757-1185
Health Promotion	☎ 757-1181
Family & Children's Consultation Office	☎ 757-1182
Children & Family Welfare	☎ 757-2563
Mother-Child & Women's Counselor	☎ 757-2564
Childcare Support	☎ 757-2566

【Shiroishi Ward Office】	☎ 861-2400
Social Work Promotion	☎ 861-2443
Welfare Subsidy	☎ 861-2446
Welfare Support	☎ 861-2449
Health & Welfare(for consultation)	☎ 861-2451

【Shiroishi Health Center】	☎ 862-1881
Health & Prevention	☎ 862-1881
Health Promotion	
Family & Children's Consultation Office	☎ 861-0336
Children & Family Welfare	
Mother-Child & Women's Counselor	☎ 861-0345
Childcare Support	

【Toyohira Ward Office】	☎ 822-2400
Social Work Promotion	☎ 822-2451
Welfare Subsidy	☎ 822-2453
Welfare Support	☎ 822-2459
Health & Welfare (for consultation)	☎ 822-2462

【Toyohira Health Center】	☎ 822-2400
Health & Prevention	☎ 822-2469
Health Promotion	☎ 822-2472
Family & Children's Consultation Office	☎ 822-2423
Children & Family Welfare	☎ 822-2473
Mother-Child & Women's Counselor	
Childcare Support	☎ 822-2474



Contact information of Each Ward Office and Health Center

【Kiyota Ward Office】	☎ 889-2400
Social Work Promotion	☎ 889-2034
Welfare Subsidy	☎ 889-2037
Welfare Support	☎ 889-2041
Health & Welfare (for consultation)	☎ 889-2043

【Minami Ward Office】	☎ 582-2400
Social Work Promotion	☎ 582-4734
Welfare Subsidy	☎ 582-4741
Welfare Support	☎ 582-4743
Health & Welfare (for consultation)	☎ 582-4747

【Kiyota Health Center】	☎ 889-2400
Health & Prevention	☎ 889-2047
Health Promotion	☎ 889-2049
Family & Children's Consultation Office	
Children & Family Welfare	☎ 889-2051
Mother-Child & Women's Counselor	
Childcare Support	☎ 889-2052

【Minami Health Center】	☎ 581-5211
Health & Prevention	☎ 581-5211
Health Promotion	
Family & Children's Consultation Office	☎ 522-5780
Children & Family Welfare	
Mother-Child & Women's Counselor	☎ 588-5411
Childcare Support	

【Nishi Ward Office】	☎ 641-2400
Social Work Promotion	☎ 641-6942
Welfare Subsidy	☎ 641-6943
Welfare Support	☎ 641-6945
Health & Welfare (for consultation)	☎ 641-6948

【Teine Ward Office】	☎ 681-2400
Social Work Promotion	☎ 681-2478
Welfare Subsidy	☎ 681-2487
Welfare Support	☎ 681-2492
Health & Welfare (for consultation)	☎ 681-2504

【Nishi Health Center】	☎ 621-4241
Health & Prevention	☎ 621-4241
Health Promotion	
Family & Children's Consultation Office	☎ 621-4242
Children & Family Welfare	
Mother-Child & Women's Counselor	☎ 641-6954
Childcare Support	

【Teine Health Center】	☎ 681-1211
Health & Prevention	☎ 681-1211
Health Promotion	
Family & Children's Consultation Office	☎ 688-8596
Children & Family Welfare	☎ 688-8597
Mother-Child & Women's Counselor	
Childcare Support	☎ 681-1342

If you are not sure who you should contact...

• Kosodate Information Dial (Sapporo City Call Center)

Open year-round (8:00 – 21:00)

(Support available in English, Chinese, Korean and Japanese)

☎ 011-222-4894 FAX 011-221-4894

E-mail [info4894@city.sapporo.or.jp](mailto:info4894@city.sapporo.or.jp)

